

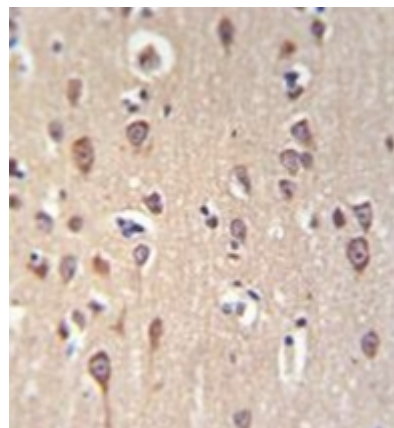
**AP51959PU-N****Polyclonal Antibody to Gastrin-releasing peptide receptor (Center) - Aff - Purified**

<b>Alternate names:</b>	GRP-R, GRP-preferring bombesin receptor, GRPR
<b>Quantity:</b>	0.4 ml
<b>Concentration:</b>	0.45 mg/mL
<b>Background:</b>	Gastrin-releasing peptide (GRP) regulates numerous functions of the gastrointestinal and central nervous systems, including release of gastrointestinal hormones, smooth muscle cell contraction, and epithelial cell proliferation and is a potent mitogen for neoplastic tissues. The effects of GRP are mediated through the gastrin-releasing peptide receptor. This receptor is a glycosylated, 7-transmembrane G-protein coupled receptor that activates the phospholipase C signaling pathway. The receptor is aberrantly expressed in numerous cancers such as those of the lung, colon, and prostate. An individual with autism and multiple exostoses was found to have a balanced translocation between chromosome 8 and a chromosome X breakpoint located within the gastrin-releasing peptide receptor gene.
<b>Uniprot ID:</b>	<a href="#">P30550</a>
<b>NCBI:</b>	<a href="#">NP_005305</a>
<b>GeneID:</b>	<a href="#">2925</a>
<b>Host / Isotype:</b>	Rabbit / Ig
<b>Immunogen:</b>	KLH conjugated synthetic peptide between 130~160 amino acids from the Central region of Human Gastrin-releasing peptide receptor <b>Gene name:</b> GRPR
<b>Format:</b>	<b>State:</b> Liquid purified Ig fraction <b>Purification:</b> Protein A column, followed by peptide affinity purification <b>Buffer System:</b> PBS containing 0.09% (W/V) Sodium Azide as preservative
<b>Applications:</b>	<b>ELISA:</b> 1/1000. <b>Western Blot:</b> 1/100-1/500. <b>Flow Cytometry:</b> 1/10-1/50. <b>Immunohistochemistry on Paraffin Sections:</b> 1/50-1/100. Other applications not tested. Optimal dilutions are dependent on conditions and should be determined by the user.
<b>Specificity:</b>	This antibody recognizes Human Gastrin-releasing peptide receptor (Center).
<b>Add. Information:</b>	<b>Molecular Weight:</b> 43199 Da
<b>Storage:</b>	Store undiluted at 2-8°C for one month or (in aliquots) at -20°C for longer. Avoid repeated freezing and thawing. Shelf life: one year from despatch.
<b>General Readings:</b>	Guey, L.T., et al. Eur. Urol. 57(2):283-292(2010) Chapuis, J., et al. Mol. Psychiatry 14(11):1004-1016(2009) Chao, C., et al. J. Surg. Res. 156(1):26-31(2009)

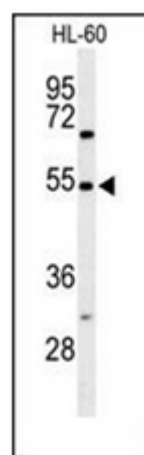
Ananias, H.J., et al. Prostate 69(10):1101-1108(2009)  
 Fleischmann, A., et al. Endocr. Relat. Cancer 16(2):623-633(2009)

**Pictures:**

Immunohistochemistry analysis in formalin fixed and paraffin embedded brain tissue reacted with GRPR Antibody (Center) Cat.-No AP51959PU-N followed by peroxidase conjugation of the secondary antibody and DAB staining.



Western blot analysis of GRPR Antibody (Center) Cat.-No AP51959PU-N in HL-60 cell line lysates (35ug/lane). GRPR (arrow) was detected using the purified Pab.



Flow cytometric analysis of HL-60 cells using GRPR Antibody (Center) Cat.-No AP51959PU-N (right histogram) compared to a negative control cell (left histogram). FITC-conjugated goat-anti-rabbit secondary antibodies were used for the analysis.

