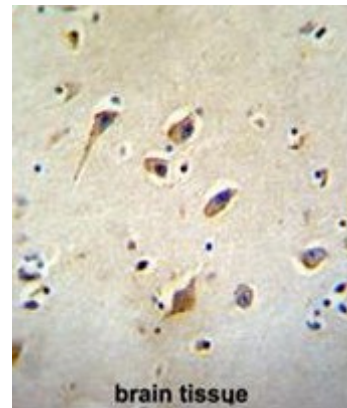


AP51895PU-N**Polyclonal Antibody to GOT1L1 (C-term) - Aff - Purified**

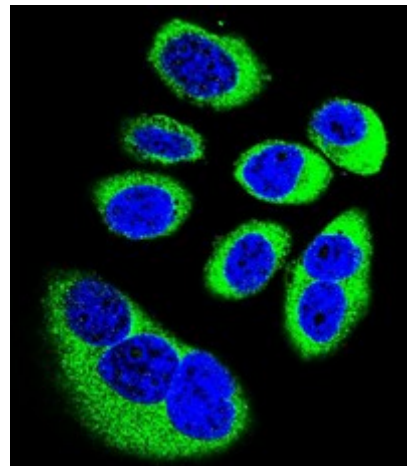
Alternate names:	Putative aspartate aminotransferase, cytoplasmic 2
Quantity:	0.4 ml
Concentration:	lot specific
Uniprot ID:	Q8NHS2
NCBI:	NP_689626
GeneID:	137362
Host / Isotype:	Rabbit / Ig
Immunogen:	KLH conjugated synthetic peptide between 353-383 amino acids from the C-terminal region of human GOT1L1
Format:	State: Liquid purified Ig fraction Purification: Affinity chromatography on Protein A Buffer System: PBS Preservatives: 0.09% (W/V) sodium azide
Applications:	ELISA: 1/1000. Western Blot: 1/100 - 1/500. Immunohistochemistry on paraffin sections: 1/50 - 1/100. Immunofluorescence: 1/10 - 1/50. Other applications not tested. Optimal dilutions are dependent on conditions and should be determined by the user.
Molecular Weight:	47305 Da
Specificity:	This antibody reacts to GOT1L1.
Species Reactivity:	Tested: Mouse.
Storage:	Store the antibody undiluted at 2-8°C for one month or (in aliquots) at -20°C for longer. Avoid repeated freezing and thawing. Shelf life: one year from despatch.
General Readings:	Chern, C.J. Cytogenet. Cell Genet. 17(6):338-342(1976)

Pictures:

GOT1L1 Antibody (C-term) (Cat. #AP51895PU-N) immunohistochemistry analysis in formalin fixed and paraffin embedded human brain tissue followed by peroxidase conjugation of the secondary antibody and DAB staining. This data demonstrates the use of GOT1L1 Antibody (C-term) for immunohistochemistry. Clinical relevance has not been evaluated.



Confocal immunofluorescent analysis of GOT1L1 Antibody (C-term) (Cat#AP51895PU-N) with U-251MG cell followed by Alexa Fluor 488-conjugated goat anti-rabbit IgG (green). DAPI was used to stain the cell nuclear (blue).



GOT1L1 Antibody (C-term) (Cat. #AP51895PU-N) western blot analysis in mouse kidney tissue lysates (35µg/lane). This demonstrates the GOT1L1 antibody detected the GOT1L1 protein (arrow).

