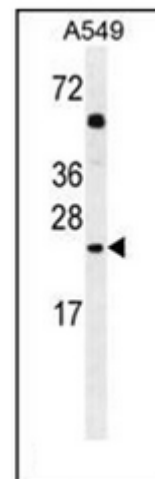


**AP51889PU-N****Polyclonal Antibody to GOLGA2L1 (C-term) - Aff - Purified**

<b>Alternate names:</b>	GOLGA2B, Golgin subfamily A member 2B
<b>Quantity:</b>	0.4 ml
<b>Concentration:</b>	lot specific
<b>Uniprot ID:</b>	<a href="#">Q9HB08</a>
<b>NCBI:</b>	<a href="#">9606</a>
<b>Host / Isotype:</b>	Rabbit / Ig
<b>Immunogen:</b>	conjugated synthetic peptide between 90-120 amino acids from the C-terminal region of human GOLGA2L1
<b>Format:</b>	<b>State:</b> Liquid purified Ig fraction <b>Purification:</b> Protein A column, followed by peptide affinity purification <b>Buffer System:</b> PBS containing 0.09% (W/V) Sodium Azide as preservative
<b>Applications:</b>	<b>ELISA:</b> 1/1000. <b>Western Blot:</b> 1/100-1/500. <b>Flow Cytometry:</b> 1/10-1/50. Other applications not tested. Optimal dilutions are dependent on conditions and should be determined by the user.
<b>Specificity:</b>	This antibody recognizes Human GOLGA2L1 (C-term).
<b>Add. Information:</b>	<b>Molecular Weight:</b> 15482 Da
<b>Storage:</b>	Store undiluted at 2-8°C for one month or (in aliquots) at -20°C for longer. Avoid repeated freezing and thawing. Shelf life: one year from despatch.
<b>Pictures:</b>	Western blot analysis of GOLGA2L1 Antibody (C-term) Cat.-No AP51889PU-N in A549 cell line lysates (35ug/lane). This demonstrates the GOLGA2L1 antibody detected the GOLGA2L1 protein (arrow).



Flow cytometric analysis of A549 cells using GOLGA2L1 Antibody (C-term) Cat.-No AP51889PU-N (right histogram) compared to a negative control cell (left histogram). FITC-conjugated goat-anti-rabbit secondary antibodies were used for the analysis.

