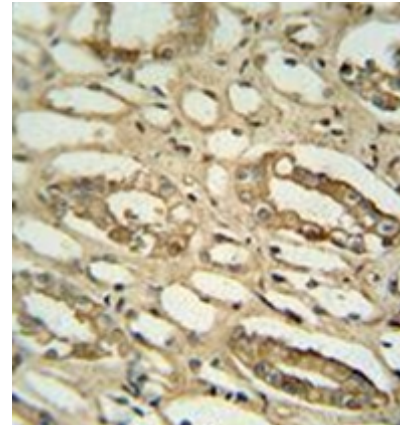


AP51833PU-N**Polyclonal Antibody to GGTL2 (Center) - Aff - Purified**

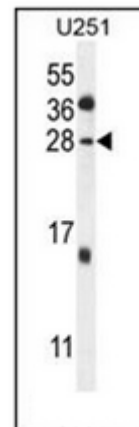
Alternate names:	GGTL4, Gamma-glutamyltransferase light chain 2
Quantity:	0.4 ml
Concentration:	lot specific
Background:	Gamma-glutamyltransferase-1 (GGT1; MIM 612346) is a membrane-bound extracellular enzyme that cleaves gamma-glutamyl peptide bonds in glutathione and other peptides and transfers the gamma-glutamyl moiety to acceptors. Autocatalytic cleavage of the GGT1 precursor polypeptide produces a heavy chain and a light chain that associate with each other to form the functional enzyme. Light chain-only GGTs, such as GGTL2, contain a region corresponding to the GGT1 light chain, but they lack the membrane-anchoring heavy chain region (Heisterkamp et al., 2008 [PubMed 18357469]).[supplied by OMIM].
Uniprot ID:	Q14390
NCBI:	NP_954578
GeneID:	91227
Host / Isotype:	Rabbit / Ig
Immunogen:	KLH conjugated synthetic peptide between 140-169 amino acids from the Central region of human GGTL2
Format:	State: Liquid purified Ig fraction Purification: Protein A column, followed by peptide affinity purification Buffer System: PBS containing 0.09% (W/V) Sodium Azide as preservative
Applications:	ELISA: 1/1000. Western Blot: 1/100-1/500. Flow Cytometry: 1/10-1/50. Immunohistochemistry on Paraffin Sections: 1/50-1/100. Other applications not tested. Optimal dilutions are dependent on conditions and should be determined by the user.
Specificity:	This antibody recognizes Human GGTL2 (Center).
Add. Information:	Molecular Weight: 23661 Da
Storage:	Store undiluted at 2-8°C for one month or (in aliquots) at -20°C for longer. Avoid repeated freezing and thawing. Shelf life: one year from despatch.
General Readings:	Heisterkamp, N., et al. Hum. Genet. 123(4):321-332(2008) Dunham, I., et al. Nature 402(6761):489-495(1999) Kawasaki, K., et al. Genome Res. 7(3):250-261(1997) Leh, H., et al. FEBS Lett. 394(3):258-262(1996) Wetmore, L.A., et al. Proc. Natl. Acad. Sci. U.S.A. 90(16):7461-7465(1993)

Pictures:

Immunohistochemistry analysis in formalin fixed and paraffin embedded human lung tissue reacted with GGTL2 Antibody (Center) Cat.-No AP51833PU-N, peroxidase conjugated to the secondary antibody and followed by DAB staining.



Western blot analysis of GGTL2 Antibody (Center) Cat.-No AP51833PU-N in U251 cell line lysates (35ug/lane). This demonstrates the GGTL2 antibody detected the GGTL2 protein (arrow).



Flow cytometric analysis of U251 cells using GGTL2 Antibody (Center) Cat.-No AP51833PU-N (right histogram) compared to a negative control cell (left histogram). FITC-conjugated goat-anti-rabbit secondary antibodies were used for the analysis

