



OriGene Technologies Inc.

9620 Medical Center Drive, Ste 200
Rockville, MD 20850
UNITED STATES
Phone: +1-888-267-4436
Fax: +1-301-340-8606
techsupport@origene.com

AP51685PU-N

OriGene EU

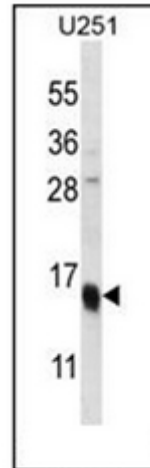
Acris Antibodies GmbH
Schillerstr. 5
32052 Herford
GERMANY
Phone: +49-5221-34606-0
Fax: +49-5221-34606-11
info@acris-antibodies.com

Polyclonal Antibody to FLJ44715 (C-term) - Aff - Purified

Alternate names:	cDNA fis, clone BRACE3021430
Catalog No.:	AP51685PU-N
Quantity:	0.1 mg
Concentration:	0.25 mg/ml
Uniprot ID:	Q6ZTF3
NCBI:	9606
Host / Isotype:	Rabbit / Ig
Immunogen:	KLH conjugated synthetic peptide between 126-155 amino acids from the C-terminal region of Human FLJ44715
Format:	State: Liquid purified Ig fraction Purification: Affinity Chromatography on Protein A Buffer System: PBS containing 0.09% (W/V) Sodium Azide as preservative
Applications:	ELISA: 1/1000. Western Blot: 1/100-1/500. Flow Cytometry: 1/10-1/50. Other applications not tested. Optimal dilutions are dependent on conditions and should be determined by the user.
Specificity:	This antibody recognizes Human FLJ44715 (C-term).
Add. Information:	Molecular Weight: 14;894 Da
Storage:	Store undiluted at 2-8°C for one month or (in aliquots) at -20°C for longer. Avoid repeated freezing and thawing. Shelf life: one year from despatch.

Pictures:

Western blot analysis of FLJ44715 Antibody (C-term) Cat.-No AP51685PU-N in U251 cell line lysates (35ug/lane). This demonstrates the FLJ44715 antibody detected the FLJ44715 protein (arrow).



Flow cytometric analysis of U251 cells using FLJ44715 Antibody (C-term) Cat.-No AP51685PU-N (right histogram) compared to a negative control cell (left histogram). FITC-conjugated goat-anti-rabbit secondary antibodies were used for the analysis.

