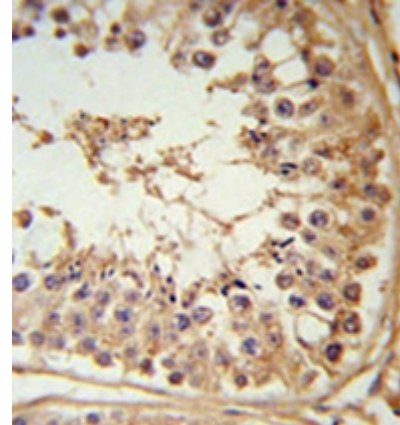


AP51622PU-N**Polyclonal Antibody to FBXL5 (N-term) - Aff - Purified**

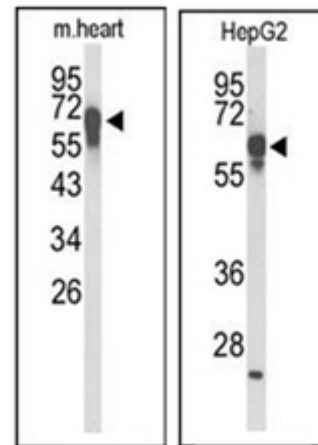
Alternate names:	F-box and leucine-rich repeat protein 5, F-box protein FBL4/FBL5, FBL4, FBL5, FLR1, p45SKP2-like protein
Quantity:	0.4 ml
Concentration:	lot specific
Uniprot ID:	Q9JKA1
NCBI:	NP_001180463
GeneID:	26234
Host / Isotype:	Rabbit / Ig
Immunogen:	KLH conjugated synthetic peptide between 93~123 amino acids from the N-terminal region of Human FBXL5.
Format:	State: Liquid purified Ig fraction Purification: Affinity Chromatography on Protein A Buffer System: PBS containing 0.09% (W/V) Sodium Azide as preservative
Applications:	ELISA: 1/1000. Western Blot: 1/100-1/500. Flow Cytometry: 1/10-1/50. Immunohistochemistry on Paraffin Sections: 1/50-1/100. Other applications not tested. Optimal dilutions are dependent on conditions and should be determined by the user.
Specificity:	This antibody recognizes Human and Mouse FBXL5 (N-term).
Add. Information:	Molecular Weight: 78;555 Da
Storage:	Store undiluted at 2-8°C for one month or (in aliquots) at -20°C for longer. Avoid repeated freezing and thawing. Shelf life: one year from despatch.
General Readings:	Salahudeen, A.A., et al. Science 326(5953):722-726(2009) Vashisht, A.A., et al. Science 326(5953):718-721(2009) Zhang, N., et al. Biochem. Biophys. Res. Commun. 359(1):34-39(2007) Ilyin, G.P., et al. Genomics 67(1):40-47(2000) Winston, J.T., et al. Curr. Biol. 9(20):1180-1182(1999) Cenciarelli, C., et al. Curr. Biol. 9(20):1177-1179(1999).

Pictures:

Immunohistochemistry in formalin fixed and paraffin embedded testis tissue reacted with FBXL5 Antibody (N-term) Cat.-No AP51622PU-N followed by peroxidase conjugation of the secondary antibody and DAB staining.



Western blot analysis of FBXL5 Antibody (N-term) Cat.-No AP51622PU-N in mouse heart tissue lysates (Left) and HepG2 cell line lysates (Right)(35ug/lane). FBXL5 (arrow) was detected using the purified Pab.



Flow cytometric analysis of HepG2 cells using FBXL5 Antibody (N-term) Cat.-No AP51622PU-N (bottom histogram) compared to a negative control cell (top histogram). FITC-conjugated goat-anti-rabbit secondary antibodies were used for the analysis.

