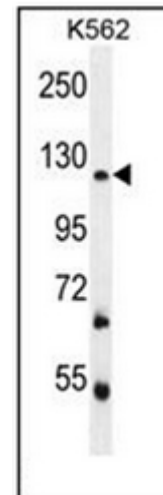


AP51617PU-N**Polyclonal Antibody to FBRSL1 (C-term) - Aff - Purified**

Alternate names:	AUTS2L, Fibrosin-1-like protein, KIAA1545, XTP9
Quantity:	0.4 ml
Concentration:	lot specific
Uniprot ID:	Q9HCM7
NCBI:	NP_001136113
GeneID:	57666
Host / Isotype:	Rabbit / Ig
Immunogen:	KLH conjugated synthetic peptide between 840-870 amino acids from the C-terminal region of Human FBRSL1
Format:	State: Liquid purified Ig fraction Purification: Affinity Chromatography on Protein A Buffer System: PBS containing 0.09% (W/V) Sodium Azide as preservative
Applications:	ELISA: 1/1000. Western Blot: 1/100-1/500. Flow Cytometry: 1/10-1/50. Other applications not tested. Optimal dilutions are dependent on conditions and should be determined by the user.
Specificity:	This antibody recognizes Human FBRSL1 (C-term).
Add. Information:	Molecular Weight: 102876 Da
Storage:	Store undiluted at 2-8°C for one month or (in aliquots) at -20°C for longer. Avoid repeated freezing and thawing. Shelf life: one year from despatch.
General Readings:	Barcellos, L.F., et al. PLoS Genet. 5 (10), E1000696 (2009).
Pictures:	Western blot analysis of FBRSL1 Antibody (C-term) Cat.-No AP51617PU-N in K562 cell line lysates (35ug/lane). This demonstrates the FBRSL1 antibody detected the FBRSL1 protein (arrow).



Flow cytometric analysis of K562 cells using FBRSL1 Antibody (C-term) Cat.-No AP51617PU-N (right histogram) compared to a negative control cell (left histogram). FITC-conjugated goat-anti-rabbit secondary antibodies were used for the analysis.

