

**AP51487PU-N****Polyclonal Antibody to Exostosin-like 3 (N-term) - Aff - Purified****Alternate names:**

EXT-related protein 1, EXTL1L, EXTR1, Glucuronyl-galactosyl-proteoglycan 4-alpha-N-acetylglucosaminyltransferase, Hereditary multiple exostoses gene isolog, KIAA0519, Multiple exostosis-like protein 3, Putative tumor suppressor protein EXTL3

**Quantity:**

0.4 ml

**Concentration:**

lot specific

**Background:**

EXTL3 is probable glycosyltransferase (By similarity).

**Uniprot ID:**

[Q43909](#)

**NCBI:**

[NP\\_001431](#)

**GeneID:**

[2137](#)

**Host / Isotype:**

Rabbit / Ig

**Immunogen:**

KLH conjugated synthetic peptide between 50~80 amino acids from the N-terminal region of human EXTL3

**Format:**

**State:** Liquid purified Ig fraction

**Purification:** Affinity Chromatography on Protein A

**Buffer System:** PBS containing 0.09% (W/V) Sodium Azide as preservative

**Applications:**

**ELISA:** 1/1000.

**Western Blot:** 1/100-1/500.

**Flow Cytometry:** 1/10-1/50.

**Immunohistochemistry on Paraffin Sections:** 1/50-1/100.

Other applications not tested. Optimal dilutions are dependent on conditions and should be determined by the user.

**Specificity:**

This antibody recognizes Human EXTL3 (N-term).

**Add. Information:**

**Molecular Weight:** 104749 Da

**Storage:**

Store undiluted at 2-8°C for one month or (in aliquots) at -20°C for longer.

Avoid repeated freezing and thawing.

Shelf life: one year from despatch.

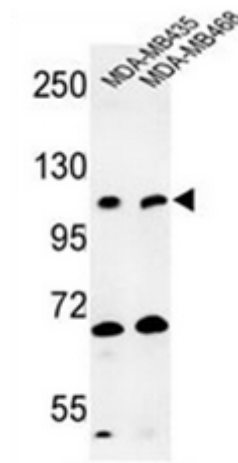
**General Readings:**

Kaidonis,X., et.al., Eur. J. Hum. Genet. 18 (2), 194-199 (2010)

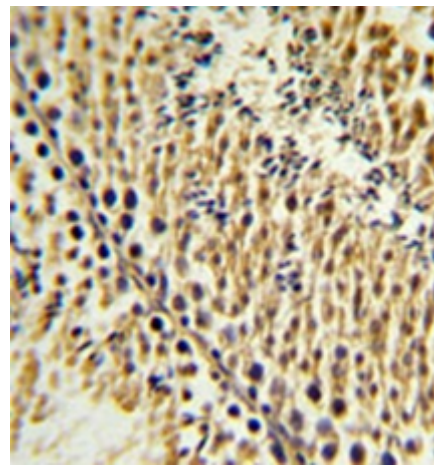
Pata,G., et.al., J Surg Oncol 100 (6), 520-522 (2009).

## Pictures:

Western blot analysis of EXTL3 Antibody (N-term) Cat.-No AP51487PU-N in MDA-MB435, MDA-MB468 cell line lysates (35ug/lane). EXTL3 (arrow) was detected using the purified Pab.



Formalin fixed and paraffin embedded testis tissue reacted with EXTL3 Antibody (N-term) Cat.-No AP51487PU-N followed by peroxidase conjugation of the secondary antibody and DAB staining.



Flow cytometric analysis of MDA-MB435 cells using EXTL3 Antibody (N-term) Cat.-No AP51487PU-N (bottom histogram) compared to a negative control cell (top histogram). FITC-conjugated goat-anti-rabbit secondary antibodies were used for the analysis.

