

**AP51486PU-N****Polyclonal Antibody to Exostosin-like 3 (N-term) - Aff - Purified****Alternate names:**

EXT-related protein 1, EXTL1L, EXTR1, Glucuronyl-galactosyl-proteoglycan 4-alpha-N-acetylglucosaminyltransferase, Hereditary multiple exostoses gene isolog, KIAA0519, Multiple exostosis-like protein 3, Putative tumor suppressor protein EXTL3

**Quantity:**

0.4 ml

**Concentration:**

0.5 mg/ml

**Background:**

EXTL3 is probable glycosyltransferase (By similarity).

**Uniprot ID:**[O43909](#)**NCBI:**[NP\\_001431](#)**GeneID:**[2137](#)**Host / Isotype:**

Rabbit / Ig

**Immunogen:**

KLH conjugated synthetic peptide between 352-382 amino acids from the N-terminal region of human EXTL3

**Format:****State:** Liquid purified Ig fraction**Purification:** Affinity Chromatography on Protein A**Buffer System:** PBS containing 0.09% (W/V) Sodium Azide as preservative**Applications:****ELISA:** 1/1000.**Western Blot:** 1/100-1/500.**Immunohistochemistry on Paraffin Sections:** 1/10-1/50.

Other applications not tested. Optimal dilutions are dependent on conditions and should be determined by the user.

**Specificity:**

This antibody recognizes Human EXTL3 (N-term).

**Add. Information:****Molecular Weight:** 104749 Da**Storage:**

Store undiluted at 2-8°C for one month or (in aliquots) at -20°C for longer.

Avoid repeated freezing and thawing.

Shelf life: one year from despatch.

**General Readings:**

Kaidonis, X., et al. Eur. J. Hum. Genet. 18(2):194-199(2010)

Pata, G., et al. J Surg Oncol 100(6):520-522(2009)

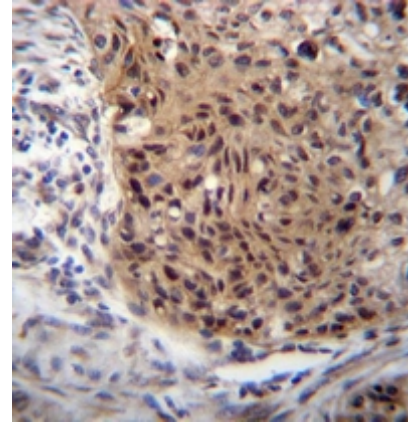
Levetan, C.S., et al. Endocr Pract 14(9):1075-1083(2008)

Karibe, T., et al. J. Pathol. 216(1):32-42(2008)

Wu, C., et al. Proteomics 7(11):1775-1785(2007).

**Pictures:**

Formalin fixed and paraffin embedded human esophageal carcinoma reacted with EXTL3 Antibody (N-term) Cat.-No AP51486PU-N followed by peroxidase conjugation of the secondary antibody and DAB staining.



Western blot analysis of EXTL3 Antibody (N-term) Cat.-No AP51486PU-N in MDA-MB435 cell line lysates (35ug/lane). This demonstrates the EXTL3 antibody detected the EXTL3 protein (arrow).

