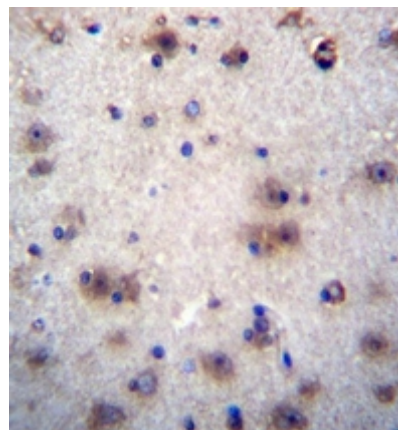


**AP51477PU-N****Polyclonal Antibody to EVPLL (Center) - Aff - Purified**

|                          |  |
|--------------------------|--|
| <b>Alternate names:</b>  | Envoplakin-like protein  |
| <b>Quantity:</b>         | 0.4 ml   |
| <b>Concentration:</b>    | lot specific   |
| <b>Uniprot ID:</b>       | <a href="#">A8MZ36</a>   |
| <b>NCBI:</b>             | <a href="#">NP_001138599</a>   |
| <b>GeneID:</b>           | <a href="#">645027</a>   |
| <b>Host / Isotype:</b>   | Rabbit / Ig  |
| <b>Immunogen:</b>        | KLH conjugated synthetic peptide between 117-146 amino acids from the Central region of human EVPLL  |
| <b>Format:</b>           | <b>State:</b> Liquid purified Ig fraction<br><b>Purification:</b> Affinity Chromatography on Protein A<br><b>Buffer System:</b> PBS containing 0.09% (W/V) Sodium Azide as preservative  |
| <b>Applications:</b>     | <b>ELISA:</b> 1/1000.<br><b>Western Blot:</b> 1/100-1/500.<br><b>Immunohistochemistry on Paraffin Sections:</b> 1/10-1/50.<br>Other applications not tested. Optimal dilutions are dependent on conditions and should be determined by the user. |
| <b>Specificity:</b>      | This antibody recognizes Human EVPLL (Center).   |
| <b>Add. Information:</b> | <b>Molecular Weight:</b> 33953 Da  |
| <b>Storage:</b>          | Store undiluted at 2-8°C for one month or (in aliquots) at -20°C for longer.<br>Avoid repeated freezing and thawing.<br>Shelf life: one year from despatch.  |
| <b>General Readings:</b> | Strausberg, R.L., et al. Proc. Natl. Acad. Sci. U.S.A. 99(26):16899-16903(2002).   |
| <b>Pictures:</b>         | Formalin fixed and paraffin embedded human brain tissue reacted with EVPLL Antibody (Center) Cat.-No AP51477PU-N followed by peroxidase conjugation of the secondary antibody and DAB staining.  |



Western blot analysis of EVPLL Antibody (Center) Cat.-No AP51477PU-N in MCF-7 cell line lysates (35ug/lane). This demonstrates the EVPLL antibody detected the EVPLL protein (arrow).

