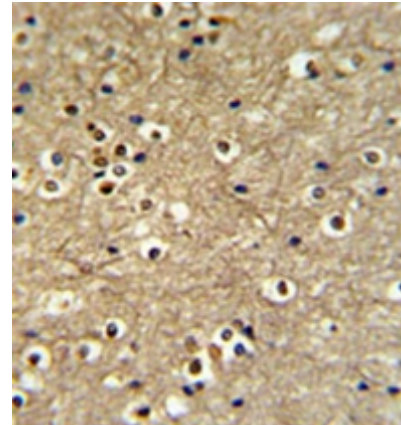


AP51471PU-N**Polyclonal Antibody to ETS2 (Center) - Aff - Purified**

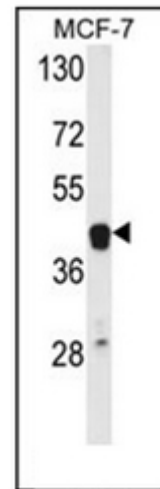
| | |
|--------------------------|-----------------------------------------------------------------------------------------------------------------------------------------------------------------------------------------------------------------------------------------------------------------------------------------------------------------------------------|
| Alternate names: | Protein C-ets-2 |
| Quantity: | 0.4 ml |
| Concentration: | lot specific |
| Background: | ETS transcriptions factors, such as ETS2, regulate numerous genes and are involved in stem cell development, cell senescence and death, and tumorigenesis. The conserved ETS domain within these proteins is a winged helix-turn-helix DNA-binding domain that recognizes the core consensus DNA sequence GGAA/T of target genes. |
| Uniprot ID: | P15036 |
| NCBI: | NP_005230 |
| GeneID: | 2114 |
| Host / Isotype: | Rabbit / Ig |
| Immunogen: | KLH conjugated synthetic peptide between 152~182 amino acids from the Central region of Human ETS2. |
| Format: | State: Liquid purified Ig fraction Purification: Protein A column, followed by peptide affinity purification Buffer System: PBS containing 0.09% (W/V) Sodium Azide as preservative |
| Applications: | ELISA: 1/1000. Western Blot: 1/100-1/500. Flow Cytometry: 1/10-1/50. Immunohistochemistry on Paraffin Sections: 1/50-1/100. Other applications not tested. Optimal dilutions are dependent on conditions and should be determined by the user. |
| Specificity: | This antibody recognizes Human ETS2 (Center). |
| Add. Information: | Molecular Weight: 53001 Da |
| Storage: | Store undiluted at 2-8°C for one month or (in aliquots) at -20°C for longer. Avoid repeated freezing and thawing. Shelf life: one year from despatch. |
| General Readings: | Zabuawala, T., et al. Cancer Res. 70(4):1323-1333(2010) Yerges, L.M., et al. J. Bone Miner. Res. 24(12):2039-2049(2009) Shalaby, A.A., et al. Mod. Pathol. 22(8):996-1005(2009) Sutter, W., et al. J Craniomaxillofac Surg 37(5):263-271(2009) Staun-Ram, E., et al. Reprod. Biol. Endocrinol. 7, 135 (2009) |

Pictures:

Formalin fixed and paraffin embedded brain tissue reacted with ETS2 Antibody (Center) Cat.-No AP51471PU-N followed by peroxidase conjugation of the secondary antibody and DAB staining.



Western blot analysis of ETS2 Antibody (Center) Cat.-No AP51471PU-N in MCF-7 cell line lysates (35ug/lane). ETS2 (arrow) was detected using the purified Pab.



Flow cytometric analysis of MCF-7 cells using ETS2 Antibody (Center) Cat.-No AP51471PU-N(right histogram) compared to a negative control cell (left histogram). FITC-conjugated goat-anti-rabbit secondary antibodies were used for the analysis.

