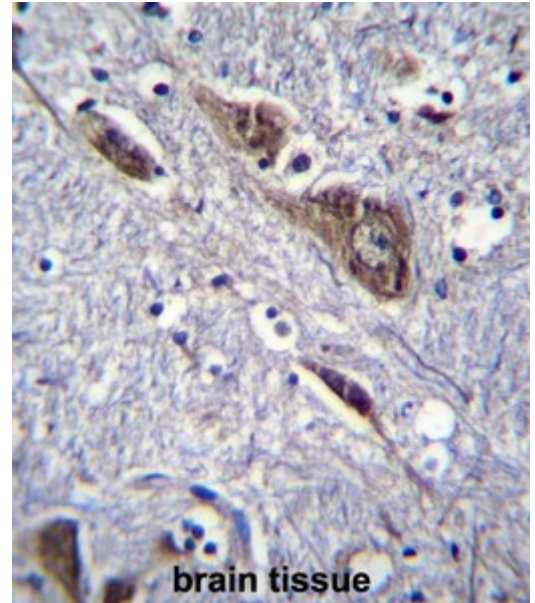


**AP51407PU-N****Polyclonal Antibody to ELAVL2 / HUB (Center) - Aff - Purified**

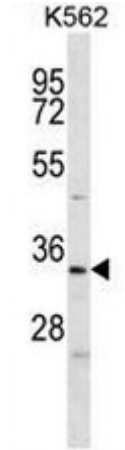
<b>Alternate names:</b>	ELAV-like neuronal protein 1, ELAV-like protein 2, Hel-N1, Hu-antigen B, Nervous system-specific RNA-binding protein Hel-N1
<b>Quantity:</b>	0.4 ml
<b>Concentration:</b>	lot specific
<b>Background:</b>	The protein encoded by this gene is a neural-specific RNA-binding protein that is known to bind to several 3' UTRs, including its own and also that of FOS and ID. The encoded protein may recognize a GAAA motif in the RNA. Three transcript variants encoding two different isoforms have been found for this gene.
<b>Uniprot ID:</b>	<a href="#">Q12926</a>
<b>NCBI:</b>	<a href="#">NP_001164666</a>
<b>GeneID:</b>	<a href="#">1993</a>
<b>Host / Isotype:</b>	Rabbit / Ig
<b>Immunogen:</b>	KLH conjugated synthetic peptide between 155-184 amino acids from the Central region of human ELAVL2
<b>Format:</b>	<b>State:</b> Liquid purified Ig fraction <b>Purification:</b> Affinity chromatography on Protein A <b>Buffer System:</b> PBS <b>Preservatives:</b> 0.09% (W/V) sodium azide
<b>Applications:</b>	<b>ELISA:</b> 1/1000. <b>Western blot:</b> 1/100 - 1/500. <b>Immunohistochemistry on paraffin sections:</b> 1/10 - 1/50. <b>Flow Cytometry:</b> 1/10 - 1/50. Other applications not tested. Optimal dilutions are dependent on conditions and should be determined by the user.
<b>Molecular Weight:</b>	39504 Da
<b>Specificity:</b>	This antibody reacts to ELAVL2.
<b>Species Reactivity:</b>	<b>Tested:</b> Human.
<b>Storage:</b>	Store the antibody undiluted at 2-8°C for one month or (in aliquots) at -20°C for longer. Avoid repeated freezing and thawing. Shelf life: one year from despatch.
<b>General Readings:</b>	1. Marroni, F., et al. <i>Circ Cardiovasc Genet</i> 2(4):322-328(2009) 2. Lowe, J.K., et al. <i>PLoS Genet.</i> 5 (2), E1000365 (2009) 3. D'Alessandro, V., et al. <i>Cell. Oncol.</i> 30(4):291-297(2008) 4. Jonson, L., et al. <i>Mol. Cell Proteomics</i> 6(5):798-811(2007) 5. Yano, M., et al. <i>J. Biol. Chem.</i> 280(13):12690-12699(2005)

**Pictures:**

ELAVL2 Antibody (Center) (Cat. #AP51407PU-N) immunohistochemistry analysis in formalin fixed and paraffin embedded human brain tissue followed by peroxidase conjugation of the secondary antibody and DAB staining. This data demonstrates the use of ELAVL2 Antibody (Center) for immunohistochemistry. Clinical relevance has not been evaluated.



ELAVL2 Antibody (Center) (Cat. #AP51407PU-N) western blot analysis in K562 cell line lysates (35µg/lane). This demonstrates the ELAVL2 antibody detected the ELAVL2 protein (arrow).



ELAVL2 Antibody (Center) (Cat. #AP51407PU-N) flow cytometric analysis of K562 cells (right histogram) compared to a negative control cell (left histogram). FITC-conjugated goat-anti-rabbit secondary antibodies were used for the analysis.

