

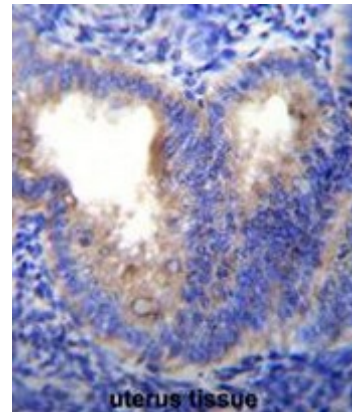
**AP51404PU-N****Polyclonal Antibody to EIF5AL1 (C-term) - Aff - Purified**

<b>Alternate names:</b>	Eukaryotic translation initiation factor 5A-1-like
<b>Quantity:</b>	0.4 ml
<b>Concentration:</b>	lot specific
<b>Background:</b>	EIF5AL1 is a mRNA-binding protein involved in translation elongation. Has an important function at the level of mRNA turnover, probably acting downstream of decapping. Involved in actin dynamics and cell cycle progression, mRNA decay and probably in a pathway involved in stress response and maintenance of cell wall integrity. Functions as a regulator of apoptosis. Mediates effects of polyamines on neuronal process extension and survival. May play an important role in brain development and function, and in skeletal muscle stem cell differentiation (By similarity).
<b>Uniprot ID:</b>	<a href="#">Q6IS14</a>
<b>NCBI:</b>	<a href="#">NP_001093162</a>
<b>GeneID:</b>	<a href="#">143244</a>
<b>Host / Isotype:</b>	Rabbit / Ig
<b>Immunogen:</b>	KLH conjugated synthetic peptide between 101-130 amino acids from the C-terminal region of human EIF5AL1
<b>Format:</b>	<b>State:</b> Liquid purified Ig fraction <b>Purification:</b> Affinity chromatography on Protein A <b>Buffer System:</b> PBS <b>Preservatives:</b> 0.09% (W/V) sodium azide
<b>Applications:</b>	<b>ELISA:</b> 1/1000. <b>Western blot:</b> 1/100 - 1/500. <b>Immunohistochemistry on paraffin sections:</b> 1/10 - 1/50. <b>Immunofluorescence:</b> 1/10 - 1/50. Other applications not tested. Optimal dilutions are dependent on conditions and should be determined by the user.
<b>Molecular Weight:</b>	16773 Da
<b>Specificity:</b>	This antibody reacts to EIF5AL1.
<b>Species Reactivity:</b>	<b>Tested:</b> Human.
<b>Storage:</b>	Store the antibody undiluted at 2-8°C for one month or (in aliquots) at -20°C for longer. Avoid repeated freezing and thawing. Shelf life: one year from despatch.
<b>General Readings:</b>	1. Kim, S.C., et al. Mol. Cell 23(4):607-618(2006) 2. Clement, P.M., et al. FEBS J. 273(6):1102-1114(2006) 3. Facchiano, A.M., et al. Protein Eng. 14(11):881-890(2001) 4. Lipowsky, G., et al. EMBO J. 19(16):4362-4371(2000)

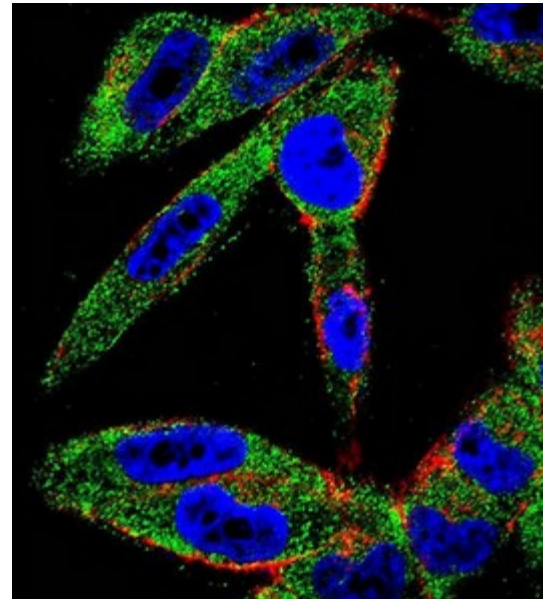
## Pictures:

5. Koettnitz, K., et al. Gene 159(2):283-284(1995)

EIF5AL1 Antibody (C-term) (Cat. #AP51404PU-N) immunohistochemistry analysis in formalin fixed and paraffin embedded human uterus tissue followed by peroxidase conjugation of the secondary antibody and DAB staining. This data demonstrates the use of EIF5AL1 Antibody (C-term) for immunohistochemistry. Clinical relevance has not been evaluated.



Confocal immunofluorescent analysis of EIF5AL1 Antibody (C-term) (Cat#AP51404PU-N) with A2058 cell followed by Alexa Fluor 488-conjugated goat anti-rabbit IgG (green). Actin filaments have been labeled with Alexa Fluor 555 phalloidin (red). DAPI was used to stain the cell nuclear (blue).



EIF5AL1 Antibody (C-term) (Cat. #AP51404PU-N) western blot analysis in Ramos, A2058 cell line lysates (35µg/lane). This demonstrates the EIF5AL1 antibody detected the EIF5AL1 protein (arrow).

