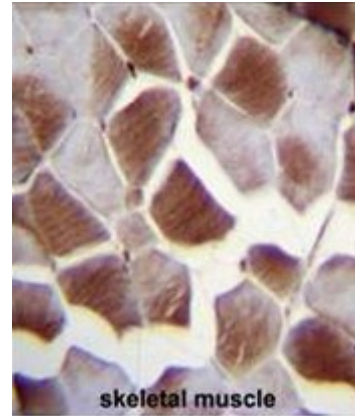


**AP51392PU-N****Polyclonal Antibody to EIF2B4 / EIF2BD (Center) - Aff - Purified**

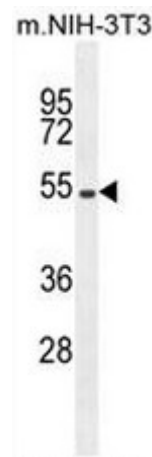
<b>Alternate names:</b>	Translation initiation factor eIF-2B subunit delta, eIF-2B GDP-GTP exchange factor subunit delta
<b>Quantity:</b>	0.4 ml
<b>Concentration:</b>	lot specific
<b>Background:</b>	Eukaryotic initiation factor 2B (EIF2B), which is necessary for protein synthesis, is a GTP exchange factor composed of five different subunits. The protein encoded by this gene is the fourth, or delta, subunit. Defects in this gene are a cause of leukoencephalopathy with vanishing white matter (VWM) and ovarioleukodystrophy. Multiple transcript variants encoding different isoforms have been found for this gene. [provided by RefSeq].
<b>Uniprot ID:</b>	<a href="#">Q9UI10</a>
<b>NCBI:</b>	<a href="#">NP_001029288</a>
<b>GeneID:</b>	<a href="#">8890</a>
<b>Host / Isotype:</b>	Rabbit / Ig
<b>Immunogen:</b>	KLH conjugated synthetic peptide between 153-183 amino acids from the Central region of human EIF2B4
<b>Format:</b>	<b>State:</b> Liquid purified Ig fraction <b>Purification:</b> Affinity chromatography on Protein A <b>Buffer System:</b> PBS <b>Preservatives:</b> 0.09% (W/V) sodium azide
<b>Applications:</b>	<b>ELISA:</b> 1/1000. <b>Western Blot:</b> 1/100 - 1/500. Immunohistochemistry on paraffin sections: 1/50 - 1/100. Other applications not tested. Optimal dilutions are dependent on conditions and should be determined by the user.
<b>Molecular Weight:</b>	57557 Da
<b>Specificity:</b>	This antibody reacts to EIF2B4.
<b>Species Reactivity:</b>	<b>Tested:</b> Human and Mouse.
<b>Storage:</b>	Store the antibody undiluted at 2-8°C for one month or (in aliquots) at -20°C for longer. Avoid repeated freezing and thawing. Shelf life: one year from despatch.
<b>General Readings:</b>	1. Naukkarinen, J., et al. PLoS Genet. 6 (6), E1000976 (2010) 2. Wu, Y., et al. J. Hum. Genet. 54(2):74-77(2009) 3. Horzinski, L., et al. PLoS ONE 4 (12), E8318 (2009) 4. Pronk, J., et al. Mult. Scler. 14(8):1123-1126(2008) 5. Wong, S.S., et al. J. Child Neurol. 23(6):710-714(2008)

**Pictures:**

EIF2B4 Antibody (Center K161) (Cat. #AP51392PU-N) immunohistochemistry analysis in formalin fixed and paraffin embedded human skeletal muscle followed by peroxidase conjugation of the secondary antibody and DAB staining. This data demonstrates the use of EIF2B4 Antibody (Center K161) for immunohistochemistry. Clinical relevance has not been evaluated.



EIF2B4 Antibody (Center K161) (Cat. #AP51392PU-N) western blot analysis in mouse NIH-3T3 cell line lysates (35µg/lane). This demonstrates the EIF2B4 antibody detected the EIF2B4 protein (arrow).



EIF2B4 Antibody (Center K161) (Cat. #AP51392PU-N) western blot analysis in K562 cell line lysates (35µg/lane). This demonstrates the EIF2B4 antibody detected the EIF2B4 protein (arrow).

