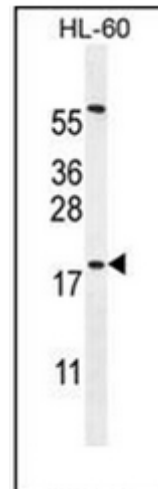


**AP51314PU-N****Polyclonal Antibody to DPPA5 / ESG1 (N-term) - Aff - Purified**

<b>Alternate names:</b>	Developmental pluripotency-associated 5 protein, Embryonal stem cell-specific gene 1 protein
<b>Quantity:</b>	0.4 ml
<b>Concentration:</b>	lot specific
<b>Background:</b>	Involved in the maintenance of embryonic stem (ES) cell pluripotency. Dispensable for self-renewal of pluripotent ES cells and establishment of germ cells. Associates with specific target mRNAs (By similarity).
<b>Uniprot ID:</b>	<a href="#">A6NC42</a>
<b>NCBI:</b>	<a href="#">NP_001020461</a>
<b>GeneID:</b>	<a href="#">340168</a>
<b>Host / Isotype:</b>	Rabbit / Ig
<b>Immunogen:</b>	KLH conjugated synthetic peptide between 9-39 amino acids from the N-terminal region of Human DPPA5
<b>Format:</b>	<b>State:</b> Liquid purified Ig fraction <b>Purification:</b> Affinity Chromatography on Protein A <b>Buffer System:</b> PBS with 0.09% (W/V) Sodium Azide as preservative
<b>Applications:</b>	<b>ELISA:</b> 1/1000. <b>Western Blot:</b> 1/100-1/500. <b>Flow Cytometry:</b> 1/10-1/50. Other applications not tested. Optimal dilutions are dependent on conditions and should be determined by the user.
<b>Specificity:</b>	This antibody recognizes Human DPPA5 (N-term).
<b>Add. Information:</b>	<b>Molecular Weight:</b> 13498 Da
<b>Storage:</b>	Store undiluted at 2-8°C for one month or (in aliquots) at -20°C for longer. Avoid repeated freezing and thawing. Shelf life: one year from despatch.
<b>General Readings:</b>	Pierre, A., et al. Genomics 90(5):583-594(2007) Kim, S.K., et al. Stem Cells 23(4):458-462(2005)

**Pictures:**

Western blot analysis of DPPA5 Antibody (N-term) Cat.-No AP51314PU-N in HL-60 cell line lysates (35ug/lane). This demonstrates the DPPA5 antibody detected the DPPA5 protein (arrow).



Flow cytometric analysis of HL-60 cells using DPPA5 Antibody (N-term) Cat.-No AP51314PU-N(right histogram) compared to a negative control cell (left histogram). FITC-conjugated goat-anti-rabbit secondary antibodies were used for the analysis.

