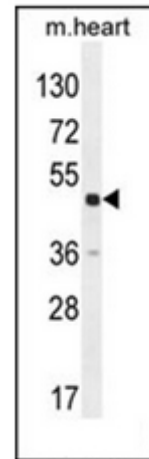


AP51310PU-N**Polyclonal Antibody to DPEP3 (C-term) - Aff - Purified**

Alternate names:	Dipeptidase 3
Quantity:	0.4 ml
Concentration:	lot specific
Background:	This gene encodes a membrane-bound glycoprotein from the family of dipeptidases involved in hydrolytic metabolism of various dipeptides, including penem and carbapenem beta-lactam antibiotics. This gene is located on chromosome 16 in a cluster with another member of this family. Alternatively spliced transcript variants that encode different isoforms have been found for this gene.
Uniprot ID:	Q9H4B8
NCBI:	NP_001123230
GeneID:	64180
Host / Isotype:	Rabbit / Ig
Immunogen:	KLH conjugated synthetic peptide between 394-424 amino acids from the C-terminal region of Human DPEP3
Format:	State: Liquid purified Ig fraction Purification: Affinity Chromatography on Protein A Buffer System: PBS with 0.09% (W/V) Sodium Azide as preservative
Applications:	ELISA: 1/1000. Western Blot: 1/100-1/500. Other applications not tested. Optimal dilutions are dependent on conditions and should be determined by the user.
Specificity:	This antibody recognizes Human and Mouse DPEP3 (C-term).
Add. Information:	Molecular Weight: 53687 Da
Storage:	Store undiluted at 2-8°C for one month or (in aliquots) at -20°C for longer. Avoid repeated freezing and thawing. Shelf life: one year from despatch.
General Readings:	Sabatti, C., et al. Nat. Genet. 41(1):35-46 (2009). Clark, H.F., et al. Genome Res. 13(10):2265-2270 (2003) Habib, G.M., et al. FASEB J. 17(10):1313-1315 (2003).

Pictures:

Western blot analysis of DPEP3 Antibody (C-term) Cat.-No AP51310PU-N in mouse heart tissue lysates (35ug/lane). This demonstrates the DPEP3 antibody detected the DPEP3 protein (arrow).



Western blot analysis of DPEP3 Antibody (C-term) Cat.-No AP51310PU-N in HepG2 cell line lysates (35ug/lane). This demonstrates the DPEP3 antibody detected the DPEP3 protein (arrow).

