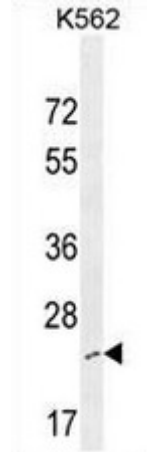


Polyclonal Antibody to CXorf38 (C-term) - Aff - Purified

Alternate names:	Uncharacterized protein
Catalog No.:	AP51146PU-N
Quantity:	0.1 mg
Concentration:	0.25 mg/ml
Uniprot ID:	Q8TB03
NCBI:	NP_659407
GeneID:	159013
Host / Isotype:	Rabbit / Ig
Immunogen:	KLH conjugated synthetic peptide between 290-319 amino acids from the C-terminal region of human CXorf38
Format:	State: Liquid purified Ig fraction Purification: Affinity chromatography on Protein A Buffer System: PBS Preservatives: 0.09% (W/V) sodium azide
Applications:	ELISA: 1/1000. Western Blot: 1/100 - 1/500. Flow Cytometry: 1/10 - 1/50. Other applications not tested. Optimal dilutions are dependent on conditions and should be determined by the user.
Molecular Weight:	36670 Da; Isoform 23kd Da
Specificity:	This antibody reacts to CXorf38.
Species Reactivity:	Tested: Human.
Storage:	Store the antibody undiluted at 2-8°C for one month or (in aliquots) at -20°C for longer. Avoid repeated freezing and thawing. Shelf life: one year from despatch.
General Readings:	1. Sugiyama, N., et al. Mol. Cell Proteomics 6(6):1103-1109(2007) 2. Olsen, J.V., et al. Cell 127(3):635-648(2006) 3. Kimura, K., et al. Genome Res. 16(1):55-65(2006) 4. Gerhard, D.S., et al. Genome Res. 14 (10B), 2121-2127 (2004) 5. Bonaldo, M.F., et al. Genome Res. 6(9):791-806(1996)

Pictures:

CXorf38 Antibody (C-term) (Cat. #AP51146PU-N) western blot analysis in K562 cell line lysates (35µg/lane). This demonstrates the CXorf38 antibody detected the CXorf38 protein (arrow).



CXorf38 Antibody (C-term) (Cat. #AP51146PU-N) flow cytometric analysis of K562 cells (right histogram) compared to a negative control cell (left histogram). FITC-conjugated goat-anti-rabbit secondary antibodies were used for the analysis.

