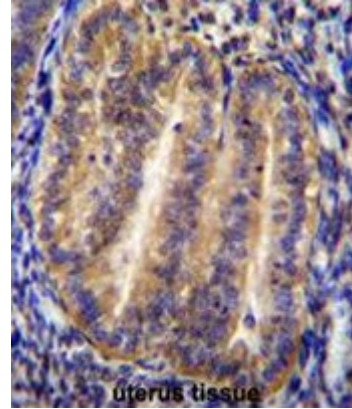


Polyclonal Antibody to CXorf30 (Center) - Aff - Purified

Alternate names:	Putative uncharacterized protein
Catalog No.:	AP51145PU-N
Quantity:	0.1 mg
Concentration:	0.25 mg/ml
Uniprot ID:	A6PW82
NCBI:	NP_001092313
GeneID:	286464
Host / Isotype:	Rabbit / Ig
Immunogen:	KLH conjugated synthetic peptide between 386-415 amino acids from the Central region of human CXorf30
Format:	State: Liquid purified Ig fraction Purification: Affinity chromatography on Protein A Buffer System: PBS Preservatives: 0.09% (W/V) sodium azide
Applications:	ELISA: 1/1000. Western Blot: 1/100 - 1/500. Immunohistochemistry on paraffin sections: 1/10 - 1/50. Other applications not tested. Optimal dilutions are dependent on conditions and should be determined by the user.
Molecular Weight:	72017 Da
Specificity:	This antibody reacts to CXorf30.
Species Reactivity:	Tested: Human.
Storage:	Store the antibody undiluted at 2-8°C for one month or (in aliquots) at -20°C for longer. Avoid repeated freezing and thawing. Shelf life: one year from despatch.
General Readings:	Harrington, J.J., et al. Nat. Biotechnol. 19(5):440-445(2001)

Pictures:

CXorf30 Antibody (Center) (Cat. #AP51145PU-N) immunohistochemistry analysis in formalin fixed and paraffin embedded human uterus tissue followed by peroxidase conjugation of the secondary antibody and DAB staining. This data demonstrates the use of CXorf30 Antibody (Center) for immunohistochemistry. Clinical relevance has not been evaluated.



CXorf30 Antibody (Center) (Cat. #AP51145PU-N) western blot analysis in 293 cell line lysates (35µg/lane). This demonstrates the CXorf30 antibody detected the CXorf30 protein (arrow).

