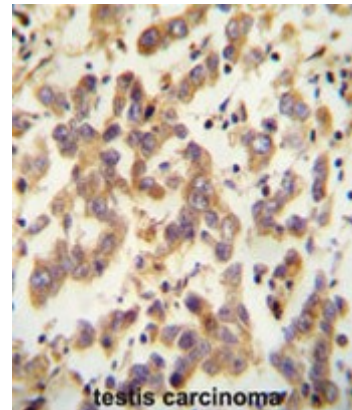


**AP51111PU-N****Polyclonal Antibody to CT173 (Center) - Aff - Purified**

<b>Alternate names:</b>	C20orf173, Uncharacterized protein C20orf173
<b>Quantity:</b>	0.4 ml
<b>Concentration:</b>	lot specific
<b>Uniprot ID:</b>	<a href="#">Q96LM9</a>
<b>NCBI:</b>	<a href="#">NP_001138822</a>
<b>GeneID:</b>	<a href="#">140873</a>
<b>Host / Isotype:</b>	Rabbit / Ig
<b>Immunogen:</b>	KLH conjugated synthetic peptide between 51-80 amino acids from the Central region of human CT173
<b>Format:</b>	<b>State:</b> Liquid purified Ig fraction <b>Purification:</b> Affinity chromatography on Protein A <b>Buffer System:</b> PBS <b>Preservatives:</b> 0.09% (W/V) sodium azide
<b>Applications:</b>	<b>ELISA:</b> 1/1000. <b>Western blot:</b> 1/100 - 1/500. <b>Immunohistochemistry on paraffin sections:</b> 1/50 - 1/100. Other applications not tested. Optimal dilutions are dependent on conditions and should be determined by the user.
<b>Molecular Weight:</b>	16552 Da
<b>Specificity:</b>	This antibody reacts to CT173.
<b>Storage:</b>	Store undiluted at 2-8°C for one month or (in aliquots) at -20°C for longer. Avoid repeated freezing and thawing. Shelf life: one year from despatch.
<b>General Readings:</b>	1. Deloukas, P., et al. Nature 414(6866):865-871(2001) 2. Venter, J.C., et al. Science 291(5507):1304-1351(2001)
<b>Pictures:</b>	CT173 antibody (Center) (Cat. #AP51111PU-N) immunohistochemistry analysis in formalin fixed and paraffin embedded human testis carcinoma followed by peroxidase conjugation of the secondary antibody and DAB staining. This data demonstrates the use of the CT173 antibody (Center) for immunohistochemistry. Clinical relevance has not been evaluated.



CT173 Antibody (Center) (Cat. #AP51111PU-N) western blot analysis in MDA-MB435 cell line lysates (35µg/lane). This demonstrates the CT173 antibody detected the CT173 protein (arrow).

