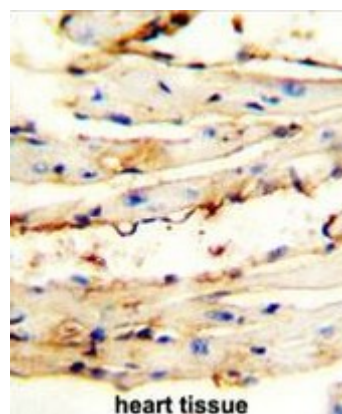
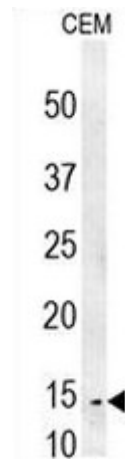


**AP51070PU-N****Polyclonal Antibody to CRCT1 (N-term) - Aff - Purified**

<b>Alternate names:</b>	C1orf42, NICE1
<b>Quantity:</b>	0.4 ml
<b>Concentration:</b>	lot specific
<b>Uniprot ID:</b>	<a href="#">Q9UGL9</a>
<b>NCBI:</b>	<a href="#">NP_061933</a>
<b>GeneID:</b>	<a href="#">54544</a>
<b>Host / Isotype:</b>	Rabbit / Ig
<b>Immunogen:</b>	KLH conjugated synthetic peptide between 1-32 amino acids from the N-terminal region of human CRCT1
<b>Format:</b>	<b>State:</b> Liquid purified Ig fraction <b>Purification:</b> Affinity chromatography on Protein A <b>Buffer System:</b> PBS <b>Preservatives:</b> 0.09% (W/V) sodium azide
<b>Applications:</b>	<b>ELISA:</b> 1/1000. <b>Western blot:</b> 1/100 - 1/500. <b>Immunohistochemistry on paraffin sections:</b> 1/50 - 1/100. <b>Flow Cytometry:</b> 1/10 - 1/50. Other applications not tested. Optimal dilutions are dependent on conditions and should be determined by the user.
<b>Molecular Weight:</b>	9736 Da
<b>Specificity:</b>	This antibody reacts to CRCT1.
<b>Species Reactivity:</b>	<b>Tested:</b> Human.
<b>Storage:</b>	Store undiluted at 2-8°C for one month or (in aliquots) at -20°C for longer. Avoid repeated freezing and thawing. Shelf life: one year from despatch.
<b>Pictures:</b>	CRCT1 antibody (N-term) (Cat. #AP51070PU-N) immunohistochemistry analysis in formalin fixed and paraffin embedded mouse heart tissue followed by peroxidase conjugation of the secondary antibody and DAB staining. This data demonstrates the use of the CRCT1 antibody (N-term) for immunohistochemistry. Clinical relevance has not been evaluated.



CRCT1 Antibody (N-term) (Cat. #AP51070PU-N) western blot analysis in CEM cell line lysates (35µg/lane). This demonstrates the CRCT1 antibody detected the CRCT1 protein (arrow).



CRCT1 Antibody (N-term) (Cat. #AP51070PU-N) flow cytometric analysis of CEM cells (right histogram) compared to a negative control cell (left histogram). FITC-conjugated goat-anti-rabbit secondary antibodies were used for the analysis.

