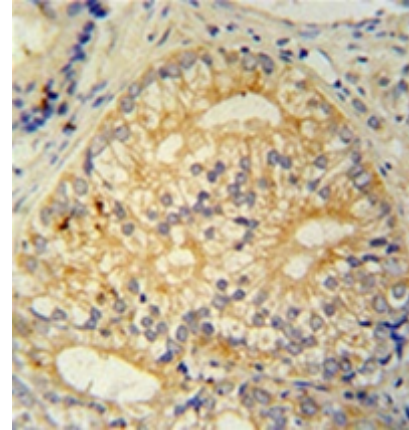


AP51041PU-N**Polyclonal Antibody to C16orf13 (N-term) - Aff - Purified**

Alternate names:	UPF0585 protein C16orf13
Quantity:	0.4 ml
Concentration:	lot specific
Uniprot ID:	Q96S19
NCBI:	NP_001035251
GeneID:	84326
Host / Isotype:	Rabbit / Ig
Immunogen:	KLH conjugated synthetic peptide between 1-30 amino acids from the N-terminal region of Human CP013. Genename: C16orf13
Format:	State: Liquid purified Ig fraction Purification: Affinity Chromatography on Protein A Buffer System: PBS Preservatives: 0.09% Sodium Azide
Applications:	ELISA: 1/1000. Western Blot: 1/100-1/500. Immunohistochemistry on Paraffin Sections: 1/50-1/100. Other applications not tested. Optimal dilutions are dependent on conditions and should be determined by the user.
Specificity:	This antibody recognizes CP013 (N-term). Species: Human, Hamster. Other species not tested.
Add. Information:	Molecular Weight: 22578 Da
Storage:	Store undiluted at 2-8°C for one month or (in aliquots) at -20°C for longer. Avoid repeated freezing and thawing. Shelf life: one year from despatch.
General Readings:	1. Oh, J.H., et al. Mamm. Genome 16(12):942-954(2005) Daniels, R.J., et al. Hum. Mol. Genet. 10(4):339-352 (2001).

Pictures:

Formalin fixed and paraffin embedded human prostate carcinoma stained with CP013 Antibody (N-term) Cat.-No AP51041PU-N followed by peroxidase conjugation of the secondary antibody and DAB staining. This data demonstrates the use of the CP013 antibody (N-term) for immunohistochemistry. Clinical relevance has not been evaluated.



Western blot analysis of CP013 Antibody (N-term) Cat.-No AP51041PU-N in CHO cell line lysates (35ug/lane). This demonstrates the CP013 antibody detected the CP013 protein (arrow).

