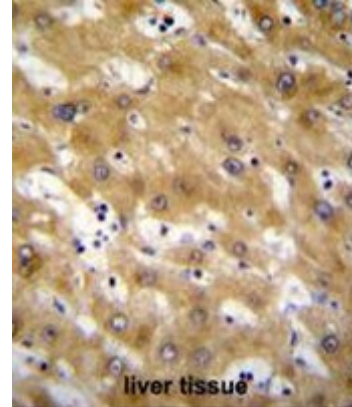


AP50958PU-N**Polyclonal Antibody to CLEC12B (C-term) - Aff - Purified**

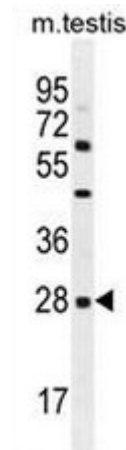
Alternate names:	C-type lectin domain family 12 member B
Quantity:	0.4 ml
Concentration:	0.46 mg/mL
Background:	Cell surface receptor that protects target cells against natural killer cell-mediated lysis. Modulates signaling cascades and mediates tyrosine phosphorylation of target MAP kinases.
Uniprot ID:	Q2HXU8
NCBI:	NP_001123470
GeneID:	387837
Host / Isotype:	Rabbit / Ig
Immunogen:	KLH conjugated synthetic peptide between 245-276 amino acids from the C-terminal region of human CLEC12B
Format:	State: Liquid purified Ig fraction Purification: Affinity chromatography on Protein A Buffer System: PBS Preservatives: 0.09% (W/V) sodium azide
Applications:	ELISA: 1/1000. Western blot: 1/100 - 1/500. Immunohistochemistry on paraffin sections: 1/50 - 1/100. Other applications not tested. Optimal dilutions are dependent on conditions and should be determined by the user.
Molecular Weight:	31616 Da
Specificity:	This antibody reacts to CLEC12B.
Species Reactivity:	Tested: Human and Mouse.
Storage:	Store undiluted at 2-8°C for one month or (in aliquots) at -20°C for longer. Avoid repeated freezing and thawing. Shelf life: one year from despatch.
General Readings:	1. Hoffmann, S.C., et al. J. Biol. Chem. 282(31):22370-22375(2007) 2. Clark, H.F., et al. Genome Res. 13(10):2265-2270(2003)

Pictures:

CLEC12B Antibody (C-term) (Cat. #AP50958PU-N) immunohistochemistry analysis in formalin fixed and paraffin embedded human liver tissue followed by peroxidase conjugation of the secondary antibody and DAB staining. This data demonstrates the use of CLEC12B Antibody (C-term) for immunohistochemistry. Clinical relevance has not been evaluated.



CLEC12B Antibody (C-term) (Cat. #AP50958PU-N) western blot analysis in mouse testis tissue lysates (35µg/lane). This demonstrates the CLEC12B antibody detected the CLEC12B protein (arrow).



CLEC12B Antibody (C-term) (Cat. #AP50958PU-N) western blot analysis in K562 cell line lysates (35µg/lane). This demonstrates the CLEC12B antibody detected the CLEC12B protein (arrow).

