

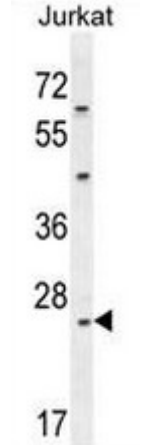
## Polyclonal Antibody to CLDN22 (Center) - Aff - Purified

<b>Alternate names:</b>	Claudin-22
<b>Catalog No.:</b>	AP50947PU-S
<b>Quantity:</b>	20 µg
<b>Concentration:</b>	lot specific
<b>Background:</b>	This gene encodes a member of the claudin family. Claudins are integral membrane proteins and components of tight junction strands. Tight junction strands serve as a physical barrier to prevent solutes and water from passing freely through the paracellular space between epithelial or endothelial cell sheets, and also play critical roles in maintaining cell polarity and signal transductions. This gene is intronless and overlaps the 3' UTR of the WWC2 gene (GeneID: 80014) on the opposite strand.
<b>Uniprot ID:</b>	<a href="#">Q8N7P3</a>
<b>NCBI:</b>	<a href="#">NP_001104789</a>
<b>GeneID:</b>	<a href="#">53842</a>
<b>Host / Isotype:</b>	Rabbit / Ig
<b>Immunogen:</b>	KLH conjugated synthetic peptide between 97-126 amino acids from the Central region of human CLDN22
<b>Format:</b>	<b>State:</b> Liquid purified Ig fraction <b>Purification:</b> Protein A column, followed by peptide affinity purification <b>Buffer System:</b> PBS <b>Preservatives:</b> 0.09% (W/V) Sodium Azide
<b>Applications:</b>	<b>ELISA:</b> 1/1000. <b>Western blot:</b> 1/100-1/500. <b>Flow Cytometry:</b> 1/10-1/50. Other applications not tested. Optimal dilutions are dependent on conditions and should be determined by the user.
<b>Molecular Weight:</b>	24509 Da
<b>Specificity:</b>	This antibody recognizes CLDN22 (Center).
<b>Species Reactivity:</b>	<b>Tested:</b> Human and Mouse.
<b>Storage:</b>	Store undiluted at 2-8°C for one month or (in aliquots) at -20°C for longer. Avoid repeated freezing and thawing. Shelf life: one year from despatch.
<b>General Readings:</b>	1. Lal-Nag, M., et al. Genome Biol. 10 (8), 235 (2009) 2. Krause, G., et al. Biochim. Biophys. Acta 1778(3):631-645(2008) 3. Hillier, L.W., et al. Nature 434(7034):724-731(2005) 4. Katoh, M., et al. Int. J. Mol. Med. 11(6):683-689(2003)

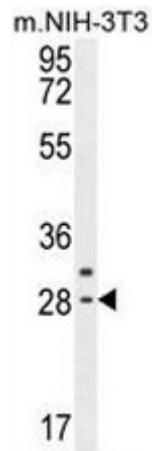
5. Gonzalez-Mariscal, L., et al. Prog. Biophys. Mol. Biol. 81(1):1-44(2003)

**Pictures:**

CLDN22 Antibody (Center) (Cat. #AP50947PU-N) western blot analysis in Jurkat cell line lysates (35µg/lane). This demonstrates the CLDN22 antibody detected the CLDN22 protein (arrow).



CLDN22 Antibody (Center) (Cat. #AP50947PU-N) western blot analysis in mouse NIH-3T3 cell line lysates (35µg/lane). This demonstrates the CLDN22 antibody detected the CLDN22 protein (arrow).



CLDN22 Antibody (Center) (Cat. #AP50947PU-N) flow cytometric analysis of Jurkat cells (right histogram) compared to a negative control cell (left histogram). FITC-conjugated goat-anti-rabbit secondary antibodies were used for the analysis.

