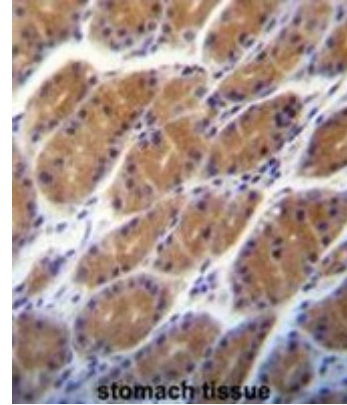


AP50945PU-N**Polyclonal Antibody to Claudin-2 / CLDN2 (C-term Y195) - Aff - Purified**

Alternate names:	CLD2, SP82
Quantity:	0.4 ml
Concentration:	lot specific
Background:	This gene product belongs to the claudin protein family whose members have been identified as major integral membrane proteins localized exclusively at tight junctions. Claudins are expressed in an organ-specific manner and regulate tissue-specific physiologic properties of tight junctions. This protein is expressed in the intestine. Alternatively spliced transcript variants with different 5' untranslated region have been found for this gene.
Uniprot ID:	P57739
NCBI:	NP_001164563
GeneID:	9075
Host / Isotype:	Rabbit / Ig
Immunogen:	KLH conjugated synthetic peptide between 181-209 amino acids from the C-terminal region of human CLDN2
Format:	State: Liquid purified Ig fraction Purification: Affinity chromatography on Protein A Buffer System: PBS Preservatives: 0.09% (W/V) sodium azide
Applications:	ELISA: 1/1000. Western blot: 1/100 - 1/500. Immunohistochemistry on paraffin sections: 1/10 - 1/50. Other applications not tested. Optimal dilutions are dependent on conditions and should be determined by the user.
Molecular Weight:	24549 Da
Specificity:	This antibody reacts to CLDN2.
Species Reactivity:	Tested: Human.
Storage:	Store undiluted at 2-8°C for one month or (in aliquots) at -20°C for longer. Avoid repeated freezing and thawing. Shelf life: one year from despatch.
General Readings:	1. Smith, A.J., et al. J. Acquir. Immune Defic. Syndr. 55(3):306-315(2010) 2. Kojima, F., et al. Oncol. Rep. 23(4):927-931(2010) 3. Szakal, D.N., et al. Virchows Arch. 456(3):245-250(2010) 4. Buchert, M., et al. Proc. Natl. Acad. Sci. U.S.A. 107(6):2628-2633(2010) 5. Mankertz, J., et al. Cell Tissue Res. 336(1):67-77(2009)

Pictures:

CLDN2 Antibody (C-term pTyr195) (Cat. #AP50945PU-N) immunohistochemistry analysis in formalin fixed and paraffin embedded human stomach tissue followed by peroxidase conjugation of the secondary antibody and DAB staining. This data demonstrates the use of CLDN2 Antibody (C-term pTyr195) for immunohistochemistry. Clinical relevance has not been evaluated.



Western blot analysis of CLDN2 (arrow) using rabbit polyclonal CLDN2 Antibody (pTyr195) (Cat. #AP50945PU-N). 293 cell lysates (2 µg/lane) either nontransfected (Lane 1) or transiently transfected (Lane 2) with the CLDN2 gene.

