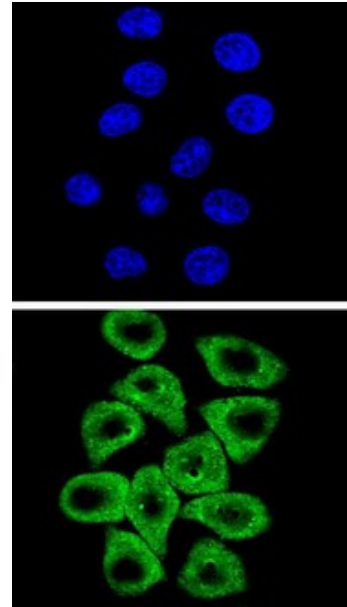


**AP50928PU-N****Polyclonal Antibody to CITED2 (C-term) - Aff - Purified**

<b>Alternate names:</b>	Cbp/p300-interacting transactivator 2, MRG1, MSG-related protein 1, P35srj
<b>Quantity:</b>	0.4 ml
<b>Concentration:</b>	lot specific
<b>Background:</b>	The protein encoded by this gene inhibits transactivation of HIF1A-induced genes by competing with binding of HIF1a to p300-CH1. Mutations in this gene are a cause of cardiac septal defects. Three transcript variants encoding the same protein have been found for this gene.
<b>Uniprot ID:</b>	<a href="#">Q99967</a>
<b>NCBI:</b>	<a href="#">NP_001161860</a>
<b>GeneID:</b>	<a href="#">10370</a>
<b>Host / Isotype:</b>	Rabbit / Ig
<b>Immunogen:</b>	KLH conjugated synthetic peptide between 207-234 amino acids from the C-terminal region of human CITED2
<b>Format:</b>	<b>State:</b> Liquid purified Ig fraction <b>Purification:</b> Affinity chromatography on Protein A <b>Buffer System:</b> PBS <b>Preservatives:</b> 0.09% (W/V) sodium azide
<b>Applications:</b>	<b>ELISA:</b> 1/1000. <b>Western blot:</b> 1/100 - 1/500. <b>Immunofluorescence:</b> 1/10 - 1/50. Other applications not tested. Optimal dilutions are dependent on conditions and should be determined by the user.
<b>Molecular Weight:</b>	28497 Da
<b>Specificity:</b>	This antibody reacts to CITED2.
<b>Species Reactivity:</b>	<b>Tested:</b> Human and Mouse.
<b>Storage:</b>	Store undiluted at 2-8°C for one month or (in aliquots) at -20°C for longer. Avoid repeated freezing and thawing. Shelf life: one year from despatch.
<b>General Readings:</b>	1. Yang, X.F., et al. Zhonghua Er Ke Za Zhi 48(4):293-296(2010) 2. Sun, H.B. Ann. N. Y. Acad. Sci. 1192, 429-436 (2010) 3. Lau, W.M., et al. Int. J. Cancer 126(4):876-884(2010) 4. van Agthoven, T., et al. Br. J. Cancer 101(11):1824-1832(2009) 5. Ganesh, S.K., et al. Nat. Genet. 41(11):1191-1198(2009)

**Pictures:**

Confocal immunofluorescent analysis of CITED2 Antibody (C-term) (Cat. #AP50928PU-N) with Hela cell followed by Alexa Fluor® 489-conjugated goat anti-rabbit IgG (green). DAPI was used to stain the cell nuclear (blue).



CITED2 Antibody (C-term) (Cat. #AP50928PU-N) western blot analysis in mouse NIH-3T3 cell line lysates (15µg/lane). This demonstrates the CITED2 antibody detected CITED2 protein (arrow).

