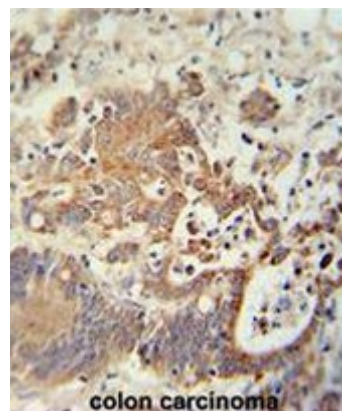


**AP50887PU-N****Polyclonal Antibody to CHCHD2 (Center) - Aff - Purified**

<b>Alternate names:</b>	C7orf17
<b>Quantity:</b>	0.4 ml
<b>Concentration:</b>	lot specific
<b>Uniprot ID:</b>	<a href="#">Q9Y6H1</a>
<b>NCBI:</b>	<a href="#">NP_057223</a>
<b>GeneID:</b>	<a href="#">51142</a>
<b>Host / Isotype:</b>	Rabbit / Ig
<b>Immunogen:</b>	KLH conjugated synthetic peptide between 81-111 amino acids from the Central region of human CHCHD2
<b>Format:</b>	<b>State:</b> Liquid purified Ig fraction <b>Purification:</b> Affinity chromatography on Protein A <b>Buffer System:</b> PBS <b>Preservatives:</b> 0.09% (W/V) sodium azide
<b>Applications:</b>	<b>ELISA:</b> 1/1000. <b>Western Blot:</b> 1/100 - 1/500. <b>Immunohistochemistry on paraffin sections:</b> 1/50 - 1/100. <b>Flow Cytometry:</b> 1/10 - 1/50. Other applications not tested. Optimal dilutions are dependent on conditions and should be determined by the user.
<b>Molecular Weight:</b>	15513 Da
<b>Specificity:</b>	This antibody reacts to CHCHD2.
<b>Species Reactivity:</b>	<b>Tested:</b> Human.
<b>Storage:</b>	Store the antibody undiluted at 2-8°C for one month or (in aliquots) at -20°C for longer. Avoid repeated freezing and thawing. Shelf life: one year from despatch.
<b>Pictures:</b>	CHCHD2 antibody (Center) (Cat. #AP50887PU-N) immunohistochemistry analysis in formalin fixed and paraffin embedded human colon carcinoma followed by peroxidase conjugation of the secondary antibody and DAB staining. This data demonstrates the use of the CHCHD2 antibody (Center) for immunohistochemistry. Clinical relevance has not been evaluated.



CHCHD2 Antibody (Center) (Cat. #AP50887PU-N) western blot analysis in WiDr cell line lysates (35µg/lane). This demonstrates the CHCHD2 antibody detected the CHCHD2 protein (arrow).



CHCHD2 Antibody (Center) (Cat. #AP50887PU-N) flow cytometric analysis of WiDr cells (right histogram) compared to a negative control cell (left histogram). FITC-conjugated goat-anti-rabbit secondary antibodies were used for the analysis.

