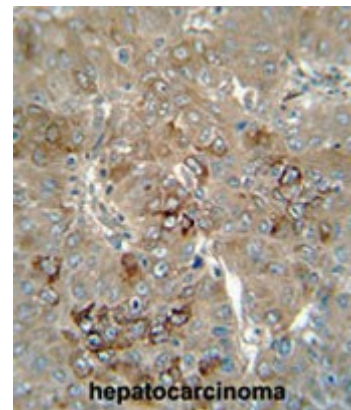


**AP50869PU-N****Polyclonal Antibody to CES4 (N-term) - Aff - Purified**

<b>Alternate names:</b>	Putative inactive carboxylesterase 4
<b>Quantity:</b>	0.4 ml
<b>Concentration:</b>	lot specific
<b>Uniprot ID:</b>	<a href="#">Q9UKY3</a>
<b>NCBI:</b>	<a href="#">9606</a>
<b>Host / Isotype:</b>	Rabbit / Ig
<b>Immunogen:</b>	KLH conjugated synthetic peptide between 50-78 amino acids from the N-terminal region of human CES4
<b>Format:</b>	<b>State:</b> Liquid purified Ig fraction <b>Purification:</b> Affinity chromatography on Protein A <b>Buffer System:</b> PBS <b>Preservatives:</b> 0.09% (W/V) sodium azide
<b>Applications:</b>	<b>ELISA:</b> 1/1000. <b>Western Blot:</b> 1/100 - 1/500. <b>Immunohistochemistry on paraffin sections:</b> 1/50 - 1/100. Other applications not tested. Optimal dilutions are dependent on conditions and should be determined by the user.
<b>Molecular Weight:</b>	30679 Da
<b>Storage:</b>	Store the antibody undiluted at 2-8°C for one month or (in aliquots) at -20°C for longer. Avoid repeated freezing and thawing. Shelf life: one year from despatch.
<b>Pictures:</b>	CES4 antibody (N-term) (Cat. #AP50869PU-N) immunohistochemistry analysis in formalin fixed and paraffin embedded human hepatocarcinoma followed by peroxidase conjugation of the secondary antibody and DAB staining. This data demonstrates the use of the CES4 antibody (N-term) for immunohistochemistry. Clinical relevance has not been evaluated.



CES4 Antibody (N-term) (Cat. #AP50869PU-N) western blot analysis in HepG2 cell line lysates (35µg/lane). This demonstrates the CES4 antibody detected the CES4 protein (arrow).

