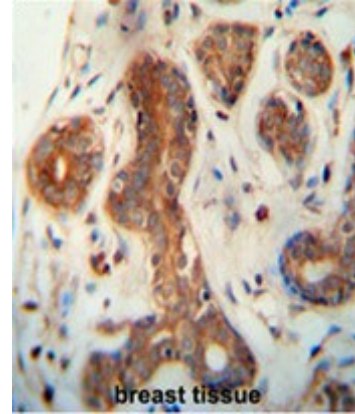


AP50865PU-N**Polyclonal Antibody to CEPT1 (N-term) - Aff - Purified**

Alternate names:	Choline/ethanolaminephosphotransferase 1
Quantity:	0.4 ml
Concentration:	lot specific
Background:	Cholinephosphotransferase catalyses the final step in the synthesis of phosphatidylcholine by the transfer of phosphocholine from CDP-choline to diacylglycerol. The synthesis of phosphatidylethanolamine by ethanolaminephosphotransferase occurs using an analogous reaction. This gene codes for a choline/ethanolaminephosphotransferase. The protein can synthesize either choline- or ethanolamine- containing phospholipids. Two alternatively spliced transcripts encoding the same isoform have been identified.
Uniprot ID:	Q9Y6K0
NCBI:	NP_001007795
GeneID:	10390
Host / Isotype:	Rabbit / Ig
Immunogen:	KLH conjugated synthetic peptide between 36-65 amino acids from the N-terminal region of human CEPT1
Format:	State: Liquid purified Ig fraction Purification: Affinity chromatography on Protein A Buffer System: PBS Preservatives: 0.09% (W/V) sodium azide.
Applications:	ELISA: 1/1000. Western blot: 1/100 - 1/500. Immunohistochemistry on paraffin sections: 1/50 - 1/100. Other applications not tested. Optimal dilutions are dependent on conditions and should be determined by the user.
Molecular Weight:	46554 Da
Specificity:	This antibody reacts to CEPT1.
Species Reactivity:	Tested: Human.
Storage:	Store undiluted at 2-8°C for one month or (in aliquots) at -20°C for longer. Avoid repeated freezing and thawing. Shelf life: one year from despatch.
General Readings:	1. Rose, J.E., et al. Mol. Med. 16 (7-8), 247-253 (2010) 2. Lamesch, P., et al. Genomics 89(3):307-315(2007) 3. Wright, M.M., et al. Lipids 37(7):663-672(2002) 4. Henneberry, A.L., et al. Biochem. J. 339 (PT 2), 291-298 (1999)

Pictures:

CEPT1 antibody (N-term) (Cat. #AP50865PU-N) immunohistochemistry analysis in formalin fixed and paraffin embedded human breast tissue followed by peroxidase conjugation of the secondary antibody and DAB staining. This data demonstrates the use of the CEPT1 antibody (N-term) for immunohistochemistry. Clinical relevance has not been evaluated.



CEPT1 Antibody (N-term) (Cat. #AP50865PU-N) western blot analysis in HL60 cell line lysates (35µg/lane). This demonstrates the CEPT1 antibody detected the CEPT1 protein (arrow).

