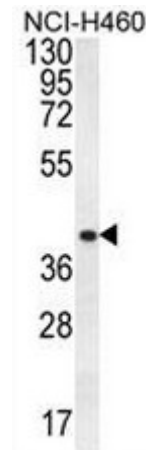


AP50825PU-N**Polyclonal Antibody to CCNYL3 (N-term) - Aff - Purified**

Alternate names:	Putative cyclin-Y-like protein 3
Quantity:	0.4 ml
Concentration:	lot specific
Uniprot ID:	POC7X3
NCBI:	9606
Host / Isotype:	Rabbit / Ig
Immunogen:	KLH conjugated synthetic peptide between 45-75 amino acids from the N-terminal region of human CCNYL3
Format:	State: Liquid purified Ig fraction Purification: Affinity chromatography on Protein A Buffer System: PBS Preservatives: 0.09% (W/V) sodium azide
Applications:	ELISA: 1/1000. Western blot: 1/100 - 1/500. Flow Cytometry: 1/10 - 1/50. Other applications not tested. Optimal dilutions are dependent on conditions and should be determined by the user.
Molecular Weight:	39078 Da
Specificity:	This antibody reacts to CCNYL3.
Species Reactivity:	Tested: Human.
Storage:	Store undiluted at 2-8°C for one month or (in aliquots) at -20°C for longer. Avoid repeated freezing and thawing. Shelf life: one year from despatch.

Pictures: CCNYL3 Antibody (N-term) (Cat. #AP50825PU-N) western blot analysis in NCI-H460 cell line lysates (35µg/lane). This demonstrates the CCNYL3 antibody detected the CCNYL3 protein (arrow).



CCNYL3 Antibody (N-term) (Cat. #AP50825PU-N) flow cytometric analysis of NCI-H460 cells (right histogram) compared to a negative control cell (left histogram). FITC-conjugated goat-anti-rabbit secondary antibodies were used for the analysis.

