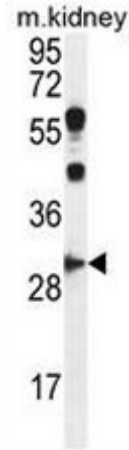


AP50811PU-N**Polyclonal Antibody to Cyclin G1 (C-term) - Purified**

Alternate names:	CCNG, CCNG1, CYCG1, Cyclin-G, Cyclin-G1
Quantity:	0.4 ml
Concentration:	lot specific
Background:	The eukaryotic cell cycle is governed by cyclin-dependent protein kinases (CDKs) whose activities are regulated by cyclins and CDK inhibitors. The protein encoded by this gene is a member of the cyclin family and contains the cyclin box. The encoded protein lacks the protein destabilizing (PEST) sequence that is present in other family members. Transcriptional activation of this gene can be induced by tumor protein p53. Two transcript variants encoding the same protein have been identified for this gene. [provided by RefSeq].
Uniprot ID:	P51959
NCBI:	NP_004051
GeneID:	900
Host / Isotype:	Rabbit / Ig
Immunogen:	KLH conjugated synthetic peptide between 249-280 amino acids from the C-terminal region of human CCNG1
Format:	State: Liquid purified Ig fraction Purification: Saturated Ammonium Sulfate (SAS) precipitation Buffer System: PBS Preservatives: 0.09% (W/V) sodium azide
Applications:	ELISA: 1/1000. Western blot: 1/50 - 1/100. Flow Cytometry: 1/10 - 1/50. Other applications not tested. Optimal dilutions are dependent on conditions and should be determined by the user.
Molecular Weight:	34074 Da
Specificity:	This antibody reacts to CCNG1.
Species Reactivity:	Tested: Mouse.
Storage:	Store undiluted at 2-8°C for one month or (in aliquots) at -20°C for longer. Avoid repeated freezing and thawing. Shelf life: one year from despatch.
General Readings:	1. Cunningham, J.M., et al. Br. J. Cancer 101(8):1461-1468(2009) 2. Fornari, F., et al. Cancer Res. 69(14):5761-5767(2009) 3. Li, H., et al. Mol. Cell. Biol. 29(3):919-928(2009) 4. Piscopo, D.M., et al. Cancer Res. 68(14):5581-5590(2008) 5. Seo, H.R., et al. J. Biol. Chem. 283(23):15601-15610(2008)

Pictures:

CCNG1 Antibody (C-term) (Cat. #AP50811PU-N) western blot analysis in mouse kidney tissue lysates (35µg/lane). This demonstrates the CCNG1 antibody detected the CCNG1 protein (arrow).



CCNG1 Antibody (C-term) (Cat. #AP50811PU-N) flow cytometric analysis of HeLa cells (right histogram) compared to a negative control cell (left histogram). FITC-conjugated goat-anti-rabbit secondary antibodies were used for the analysis.

