

AP50801PU-N**Polyclonal Antibody to 6CKine / CCL21 (Center) - Aff - Purified****Alternate names:**

Beta chemokine Exodus-2, CCL-21, SCYA21, SLC, Secondary lymphoid-tissue chemokine, Small-inducible cytokine A21

Quantity:

0.4 ml

Concentration:

0.5 mg/ml

Background:

This gene is one of several CC cytokine genes clustered on the p-arm of chromosome 9. Cytokines are a family of secreted proteins involved in immunoregulatory and inflammatory processes. The CC cytokines are proteins characterized by two adjacent cysteines. Similar to other chemokines the protein encoded by this gene inhibits hemopoiesis and stimulates chemotaxis. This protein is chemotactic in vitro for thymocytes and activated T cells, but not for B cells, macrophages, or neutrophils. The cytokine encoded by this gene may also play a role in mediating homing of lymphocytes to secondary lymphoid organs. It is a high affinity functional ligand for chemokine receptor 7 (CCR7) that is expressed on T and B lymphocytes and a known receptor for another member of the cytokine family (small inducible cytokine A19). [provided by RefSeq].

Uniprot ID:

[Q00585](#)

NCBI:

[NP_002980](#)

GeneID:

[6366](#)

Host / Isotype:

Rabbit / Ig

Immunogen:

KLH conjugated synthetic peptide between 23-52 amino acids from the Central region of Human CCL21.

Format:

State: Liquid purified Ig fraction

Purification: Affinity Chromatography on Protein A

Buffer System: PBS

Preservatives: 0.09% (W/V) Sodium Azide

Applications:

ELISA: 1/1000.

Western blot: 1/1000.

Immunohistochemistry on Paraffin Sections: 1/50-1/100.

Other applications not tested. Optimal dilutions are dependent on conditions and should be determined by the user.

Molecular Weight:

14646 Da

Specificity:

This antibody reacts to CCL21.

Species Reactivity:

Tested: Human.

Storage:

Store undiluted at 2-8°C for one month or (in aliquots) at -20°C for longer.

Avoid repeated freezing and thawing.

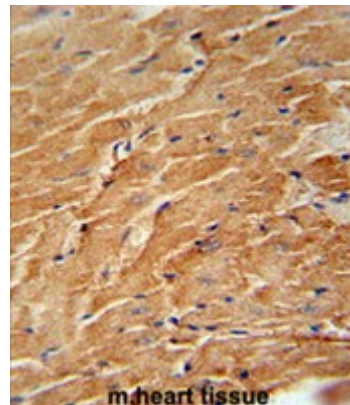
Shelf life: one year from despatch.

General Readings:

1. Rey-Gallardo, A., et al. Glycobiology 20(9):1139-1146(2010)
2. Cuesta-Mateos, C., et al. Exp. Hematol. 38(9):756-764(2010)
3. Sundqvist, J., et al. Fertil. Steril. (2010)
4. Plant, D., et al. Ann. Rheum. Dis. 69(8):1548-1553(2010)
5. Farragher, T.M., et al. Arthritis Care Res (Hoboken) 62(5):676-682(2010)

Pictures:

CCL21 Antibody (Center) (Cat. #AP50801PU-N) immunohistochemistry analysis in formalin fixed and paraffin embedded mouse heart tissue followed by peroxidase conjugation of the secondary antibody and DAB staining. This data demonstrates the use of the CCL21 Antibody (Center) for immunohistochemistry. Clinical relevance has not been evaluated.



CCL21 Antibody (Center) (Cat. #AP50801PU-N) western blot analysis in 293 cell line lysates (35µg/lane). This demonstrates the CCL21 antibody detected the CCL21 protein (arrow).

