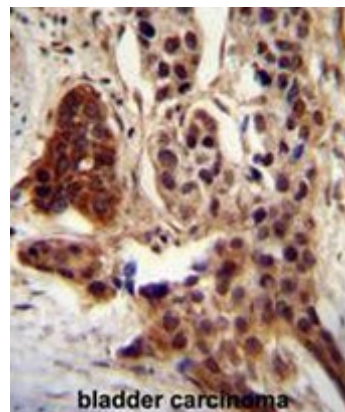


AP50761PU-N**Polyclonal Antibody to CCDC122 (C-term) - Aff - Purified**

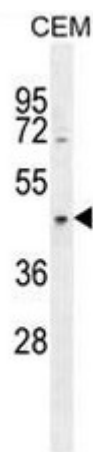
Alternate names:	Coiled-coil domain-containing protein 122
Quantity:	0.4 ml
Concentration:	lot specific
Uniprot ID:	Q5T0U0
NCBI:	NP_659411
GeneID:	160857
Host / Isotype:	Rabbit / Ig
Immunogen:	KLH conjugated synthetic peptide between 206-235 amino acids from the C-terminal region of human CCDC122
Format:	State: Liquid purified Ig fraction Purification: Affinity chromatography on Protein A Buffer System: PBS Preservatives: 0.09% (W/V) sodium azide
Applications:	ELISA: 1/1000. Western blot: 1/100 - 1/500. Immunohistochemistry on paraffin sections: 1/50 - 1/100. Flow Cytometry: 1/10 - 1/50. Other applications not tested. Optimal dilutions are dependent on conditions and should be determined by the user.
Molecular Weight:	32206 Da
Specificity:	This antibody reacts CCDC122.
Species Reactivity:	Tested: Human.
Storage:	Store undiluted at 2-8°C for one month or (in aliquots) at -20°C for longer. Avoid repeated freezing and thawing. Shelf life: one year from despatch.
General Readings:	1. Zhang, F.R., et al. N. Engl. J. Med. 361(27):2609-2618(2009) 2. Szafranski, K., et al. Genome Biol. 8 (8), R154 (2007)

Pictures:

CCDC122 antibody (C-term) (Cat. #AP50761PU-N) immunohistochemistry analysis in formalin fixed and paraffin embedded human bladder carcinoma followed by peroxidase conjugation of the secondary antibody and DAB staining. This data demonstrates the use of CCDC122 antibody (C-term) for immunohistochemistry. Clinical relevance has not been evaluated.



CCDC122 Antibody (C-term) (Cat. #AP50761PU-N) western blot analysis in CEM cell line lysates (35µg/lane). This demonstrates the CCDC122 antibody detected the CCDC122 protein (arrow).



CCDC122 Antibody (C-term) (Cat. #AP50761PU-N) flow cytometric analysis of CEM cells (right histogram) compared to a negative control cell (left histogram). FITC-conjugated goat-anti-rabbit secondary antibodies were used for the analysis.

