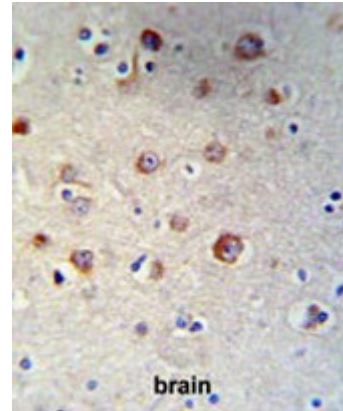


## Polyclonal Antibody to CC023 (Center) - Aff - Purified

<b>Alternate names:</b>	C3orf23, Uncharacterized protein C3orf23
<b>Catalog No.:</b>	AP50747PU-N
<b>Quantity:</b>	0.1 mg
<b>Concentration:</b>	0.25 mg/ml
<b>Uniprot ID:</b>	<a href="#">Q8N3R3</a>
<b>NCBI:</b>	<a href="#">NP_001025010</a>
<b>GeneID:</b>	<a href="#">285343</a>
<b>Host / Isotype:</b>	Rabbit / Ig
<b>Immunogen:</b>	KLH conjugated synthetic peptide between 198~228 amino acids from the Central region of human CC023
<b>Format:</b>	<b>State:</b> Liquid purified Ig fraction <b>Purification:</b> Affinity chromatography on Protein A <b>Buffer System:</b> PBS <b>Preservatives:</b> 0.09% (W/V) sodium azide
<b>Applications:</b>	<b>ELISA:</b> 1/1000. <b>Western blot:</b> 1/100 - 1/500. <b>Immunohistochemistry on paraffin sections:</b> 1/50 - 1/100. Other applications not tested. Optimal dilutions are dependent on conditions and should be determined by the user.
<b>Molecular Weight:</b>	57925 Da
<b>Specificity:</b>	This antibody reacts to CC023.
<b>Species Reactivity:</b>	<b>Tested:</b> Human and Mouse.
<b>Storage:</b>	Store undiluted at 2-8°C for one month or (in aliquots) at -20°C for longer. Avoid repeated freezing and thawing. Shelf life: one year from despatch.
<b>General Readings:</b>	Simpson, J.C., et al. EMBO Rep. 1(3):287-292(2000)

**Pictures:**

CC023 Antibody (Center) (Cat. #AP50747PU-N) IHC analysis in formalin fixed and paraffin embedded brain tissue followed by peroxidase conjugation of the secondary antibody and DAB staining. This data demonstrates the use of the CC023 Antibody (Center) for immunohistochemistry. Clinical relevance has not been evaluated.



Western blot analysis of CC023 Antibody (Center) (Cat. #AP50747PU-N) in mouse kidney tissue lysates (35µg/lane). CC023 (arrow) was detected using the purified Pab.

