

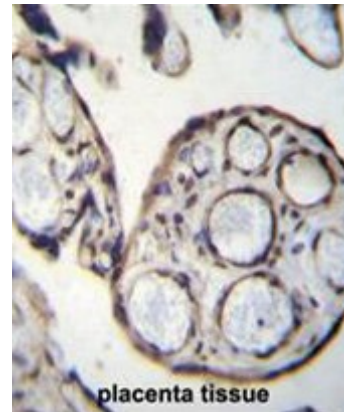
**AP50726PU-N****Polyclonal Antibody to Calpain-6 (Center) - Aff - Purified**

<b>Alternate names:</b>	CALPM, CANPX, CAPN6, Calpain-like protease X-linked, Calpamodulin
<b>Quantity:</b>	0.4 ml
<b>Concentration:</b>	lot specific
<b>Background:</b>	Calpains are ubiquitous, well-conserved family of calcium-dependent, cysteine proteases. The calpain proteins are heterodimers consisting of an invariant small subunit and variable large subunits. The large subunit possesses a cysteine protease domain, and both subunits possess calcium-binding domains. Calpains have been implicated in neurodegenerative processes, as their activation can be triggered by calcium influx and oxidative stress. The protein encoded by this gene is highly expressed in the placenta. Its C-terminal region lacks any homology to the calmodulin-like domain of other calpains. The protein lacks critical active site residues and thus is suggested to be proteolytically inactive. The protein may play a role in tumor formation by inhibiting apoptosis and promoting angiogenesis.
<b>Uniprot ID:</b>	<a href="#">Q9Y6Q1</a>
<b>NCBI:</b>	<a href="#">NP_055104</a>
<b>GenelD:</b>	<a href="#">827</a>
<b>Host / Isotype:</b>	Rabbit / Ig
<b>Immunogen:</b>	KLH conjugated synthetic peptide between 289-319 amino acids from the Central region of human CAPN6
<b>Format:</b>	<b>State:</b> Liquid purified Ig fraction <b>Purification:</b> Affinity Chromatography on Protein A <b>Buffer System:</b> PBS <b>Preservatives:</b> 0.09% (W/V) sodium azide
<b>Applications:</b>	<b>ELISA:</b> 1/1000. <b>Western blot:</b> 1/100 - 1/500. <b>Immunohistochemistry on paraffin sections:</b> 1/10 - 1/50. Other applications not tested. Optimal dilutions are dependent on conditions and should be determined by the user.
<b>Molecular Weight:</b>	74576 Da
<b>Specificity:</b>	This antibody reacts to CAPN6.
<b>Species Reactivity:</b>	<b>Tested:</b> Human.
<b>Storage:</b>	Store undiluted at 2-8°C for one month or (in aliquots) at -20°C for longer. Avoid repeated freezing and thawing. Shelf life: one year from despatch.
<b>General Readings:</b>	1. Bailey, S.D., et al. Diabetes Care 33(10):2250-2253(2010) 2. Secolin, R., et al. Psychiatr. Genet. 20(3):126-129(2010) 3. Talmud, P.J., et al. Am. J. Hum. Genet. 85(5):628-642(2009) 4. Rho, S.B., et al. Cancer Lett. 271(2):306-313(2008)

## Pictures:

5. Rojas, F.J., et al. Mol. Hum. Reprod. 5(6):520-526(1999)

CAPN6 Antibody (Center) (Cat. #AP50726PU-N) immunohistochemistry analysis in formalin fixed and paraffin embedded human placenta tissue followed by peroxidase conjugation of the secondary antibody and DAB staining. This data demonstrates the use of CAPN6 Antibody (Center) for immunohistochemistry. Clinical relevance has not been evaluated.



CAPN6 Antibody (Center) (Cat. #AP50726PU-N) western blot analysis in HL-60 cell line lysates (35µg/lane). This demonstrates the CAPN6 antibody detected the CAPN6 protein (arrow).

