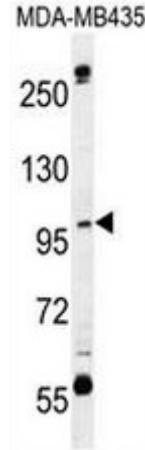


**AP50691PU-N****Polyclonal Antibody to CA026 (N-term) - Aff - Purified**

<b>Alternate names:</b>	C1orf26, Uncharacterized protein C1orf26
<b>Quantity:</b>	0.4 ml
<b>Concentration:</b>	lot specific
<b>Uniprot ID:</b>	<a href="#">Q5T5I6</a>
<b>NCBI:</b>	<a href="#">NP_001098988</a>
<b>GeneID:</b>	<a href="#">54823</a>
<b>Host / Isotype:</b>	Rabbit / Ig
<b>Immunogen:</b>	KLH conjugated synthetic peptide between 286-314 amino acids from the N-terminal region of human CA026
<b>Format:</b>	<b>State:</b> Liquid purified Ig fraction <b>Purification:</b> Affinity chromatography on Protein A <b>Buffer System:</b> PBS <b>Preservatives:</b> 0.09% (W/V) sodium azide
<b>Applications:</b>	<b>ELISA:</b> 1/1000. <b>Western blot:</b> 1/100 - 1/500. <b>Flow Cytometry:</b> 1/10 - 1/50. Other applications not tested. Optimal dilutions are dependent on conditions and should be determined by the user.
<b>Molecular Weight:</b>	103222 Da
<b>Specificity:</b>	This antibody reacts to CA026.
<b>Species Reactivity:</b>	<b>Tested:</b> Human.
<b>Storage:</b>	Store the antibody undiluted at 2-8°C for one month or (in aliquots) at -20°C for longer. Avoid repeated freezing and thawing. Shelf life: one year from despatch.
<b>General Readings:</b>	1. Ichikawa, S., et al. J. Bone Miner. Res. 25(8):1821-1829(2010) 2. Davila, S., et al. Genes Immun. 11(3):232-238(2010) 3. Trynka, G., et al. Gut 58(8):1078-1083(2009) 4. Sood, R., et al. Genomics 73(2):211-222(2001)

**Pictures:**

CA026 Antibody (N-term) (Cat. #AP50691PU-N) western blot analysis in MDA-MB435 cell line lysates (35µg/lane). This demonstrates the CA026 antibody detected the CA026 protein (arrow).



CA026 Antibody (N-term) (Cat. #AP50691PU-N) flow cytometric analysis of MDA-MB435 cells (right histogram) compared to a negative control cell (left histogram). FITC-conjugated goat-anti-rabbit secondary antibodies were used for the analysis.

