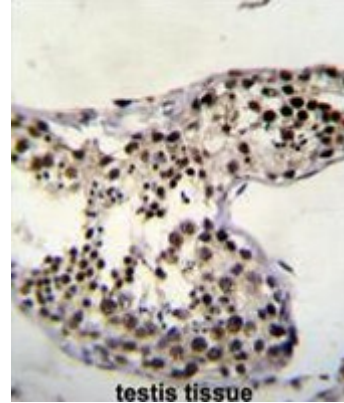


## Polyclonal Antibody to C9orf171 (C-term) - Aff - Purified

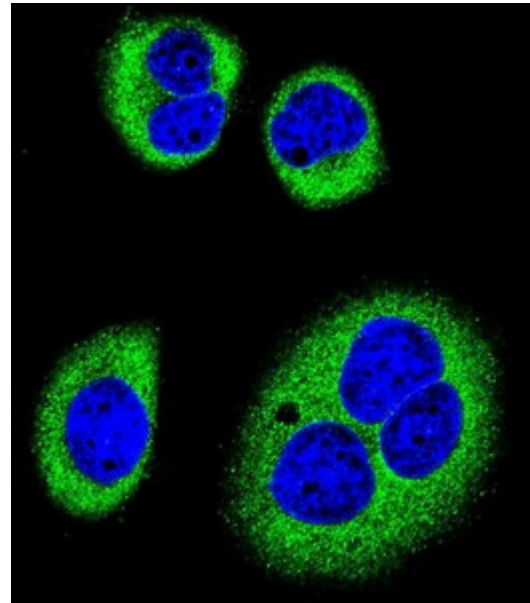
<b>Alternate names:</b>	Uncharacterized protein
<b>Catalog No.:</b>	AP50685PU-N
<b>Quantity:</b>	0.1 mg
<b>Concentration:</b>	0.25 mg/ml
<b>Uniprot ID:</b>	<a href="#">Q6ZQR2</a>
<b>NCBI:</b>	<a href="#">NP_997300</a>
<b>GeneID:</b>	<a href="#">389799</a>
<b>Host / Isotype:</b>	Rabbit / Ig
<b>Immunogen:</b>	KLH conjugated synthetic peptide between 248-278 amino acids from the C-terminal region of human C9orf171
<b>Format:</b>	<b>State:</b> Liquid purified Ig fraction <b>Purification:</b> Affinity chromatography on Protein A <b>Buffer System:</b> PBS <b>Preservatives:</b> 0.09% (W/V) sodium azide
<b>Applications:</b>	<b>ELISA:</b> 1/1000. <b>Western blot:</b> 1/100 - 1/500. <b>Immunohistochemistry on paraffin sections:</b> 1/10 - 1/50. <b>Immunofluorescence:</b> 1/10 - 1/50. Other applications not tested. Optimal dilutions are dependent on conditions and should be determined by the user.
<b>Molecular Weight:</b>	36499 Da
<b>Specificity:</b>	This antibody reacts to C9orf171.
<b>Species Reactivity:</b>	<b>Tested:</b> Human.
<b>Storage:</b>	Store the antibody undiluted at 2-8°C for one month or (in aliquots) at -20°C for longer. Avoid repeated freezing and thawing. Shelf life: one year from despatch.
<b>General Readings:</b>	1. Bailey, S.D., et al. Diabetes Care (2010) 2. Rose, J.E., et al. Mol. Med. 16 (7-8), 247-253 (2010) 3. Talmud, P.J., et al. Am. J. Hum. Genet. 85(5):628-642(2009)

Pictures:

C9orf171 Antibody (C-term) (Cat. #AP50685PU-N) immunohistochemistry analysis in formalin fixed and paraffin embedded human testis tissue followed by peroxidase conjugation of the secondary antibody and DAB staining. This data demonstrates the use of C9orf171 Antibody (C-term) for immunohistochemistry. Clinical relevance has not been evaluated.



Confocal immunofluorescent analysis of C9orf171 Antibody (C-term) (Cat.#AP50685PU-N) with U-251MG cell followed by Alexa Fluor 488-conjugated goat anti-rabbit IgG (green). DAPI was used to stain the cell nuclear (blue).



C9orf171 Antibody (C-term) (Cat. #AP50685PU-N) western blot analysis in K562 cell line lysates (35µg/lane). This demonstrates the C9orf171 antibody detected the C9orf171 protein (arrow).

