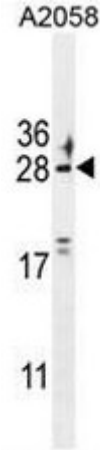


Polyclonal Antibody to C9orf163 (Center) - Aff - Purified

Alternate names:	Uncharacterized protein
Catalog No.:	AP50682PU-N
Quantity:	0.1 mg
Concentration:	0.25 mg/ml
Uniprot ID:	Q8N9P6
NCBI:	NP_689784
GeneID:	158055
Host / Isotype:	Rabbit / Ig
Immunogen:	KLH conjugated synthetic peptide between 56-85 amino acids from the Central region of human C9orf163
Format:	State: Liquid purified Ig fraction Purification: Affinity chromatography on Protein A Buffer System: PBS Preservatives: 0.09% (W/V) sodium azide
Applications:	ELISA: 1/1000. Western blot: 1/100 - 1/500. Flow Cytometry: 1/10 - 1/50. Other applications not tested. Optimal dilutions are dependent on conditions and should be determined by the user.
Molecular Weight:	22154 Da
Specificity:	This antibody reacts to C9orf163.
Species Reactivity:	Tested: Human.
Storage:	Store the antibody undiluted at 2-8°C for one month or (in aliquots) at -20°C for longer. Avoid repeated freezing and thawing. Shelf life: one year from despatch.
General Readings:	Ewing, R.M., et al. Mol. Syst. Biol. 3, 89 (2007)

Pictures:

C9orf163 Antibody (Center) (Cat. #AP50682PU-N) western blot analysis in A2058 cell line lysates (35µg/lane). This demonstrates the C9orf163 antibody detected the C9orf163 protein (arrow).



C9orf163 Antibody (Center) (Cat. #AP50682PU-N) flow cytometric analysis of A2058 cells (right histogram) compared to a negative control cell (left histogram). FITC-conjugated goat-anti-rabbit secondary antibodies were used for the analysis.

