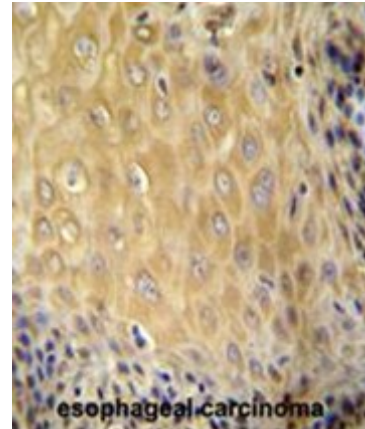


**AP50661PU-N****Polyclonal Antibody to C6orf70 (Center) - Aff - Purified**

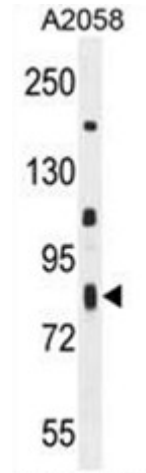
<b>Alternate names:</b>	Transmembrane protein
<b>Quantity:</b>	0.4 ml
<b>Concentration:</b>	lot specific
<b>Uniprot ID:</b>	<a href="#">Q5T6L9</a>
<b>NCBI:</b>	<a href="#">NP_060811</a>
<b>GeneID:</b>	<a href="#">55780</a>
<b>Host / Isotype:</b>	Rabbit / Ig
<b>Immunogen:</b>	KLH conjugated synthetic peptide between 346-375 amino acids from the Central region of human C6orf70
<b>Format:</b>	<b>State:</b> Liquid purified Ig fraction <b>Purification:</b> Affinity chromatography on Protein A <b>Buffer System:</b> PBS containing 0.09% (W/V) sodium azide as preservative
<b>Applications:</b>	<b>ELISA:</b> 1/1000. <b>Western blotting:</b> 1/100 - 1/500. <b>Immunohistochemistry on paraffin sections:</b> 1/50 - 1/100. <b>Flow Cytometry:</b> 1/10 - 1/50. Other applications not tested. Optimal dilutions are dependent on conditions and should be determined by the user.
<b>Specificity:</b>	This antibody reacts to C6orf70.
<b>Species Reactivity:</b>	<b>Tested:</b> Human.
<b>Add. Information:</b>	<b>Molecular Weight:</b> 77788 Da
<b>Storage:</b>	Store the antibody undiluted at 2-8°C for one month or (in aliquots) at -20°C for longer. Avoid repeated freezing and thawing. Shelf life: one year from despatch.
<b>General Readings:</b>	Wistow, G., et al. Mol. Vis. 8, 205-220 (2002)

**Pictures:**

C6orf70 antibody (Center) (Cat. #AP50661PU-N) immunohistochemistry analysis in formalin fixed and paraffin embedded human esophageal carcinoma followed by peroxidase conjugation of the secondary antibody and DAB staining. This data demonstrates the use of the C6orf70 antibody (Center) for immunohistochemistry. Clinical relevance has not been evaluated.



C6orf70 Antibody (Center) (Cat. #AP50661PU-N) western blot analysis in A2058 cell line lysates (35µg/lane). This demonstrates the C6orf70 antibody detected the C6orf70 protein (arrow).



C6orf70 Antibody (Center) (Cat. #AP50661PU-N) flow cytometric analysis of A2058 cells (right histogram) compared to a negative control cell (left histogram). FITC-conjugated goat-anti-rabbit secondary antibodies were used for the analysis.

