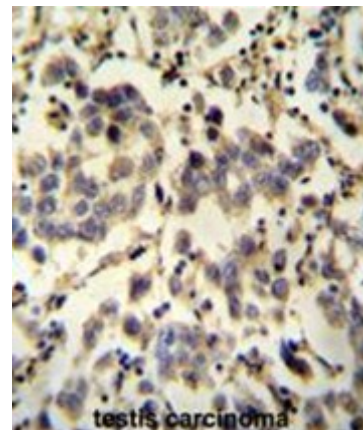
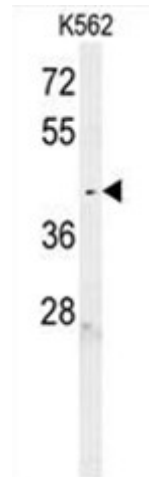


**AP50659PU-N****Polyclonal Antibody to LEG1 / C6orf58 (Center) - Aff - Purified**

<b>Alternate names:</b>	Protein LEG1 homolog
<b>Quantity:</b>	0.4 ml
<b>Concentration:</b>	lot specific
<b>Uniprot ID:</b>	<a href="#">Q6P5S2</a>
<b>NCBI:</b>	<a href="#">NP_001010905</a>
<b>GeneID:</b>	<a href="#">352999</a>
<b>Host / Isotype:</b>	Rabbit / Ig
<b>Immunogen:</b>	KLH conjugated synthetic peptide between 212-241 amino acids from the Central region of human C6orf58
<b>Format:</b>	<b>State:</b> Liquid purified Ig fraction <b>Purification:</b> Affinity chromatography on Protein A <b>Buffer System:</b> PBS containing 0.09% (W/V) sodium azide as preservative
<b>Applications:</b>	<b>ELISA:</b> 1/1000. <b>Western blotting:</b> 1/100 - 1/500. <b>Immunohistochemistry on paraffin sections:</b> 1/50 - 1/100. <b>Flow Cytometry:</b> 1/10 - 1/50. Other applications not tested. Optimal dilutions are dependent on conditions and should be determined by the user.
<b>Specificity:</b>	This antibody reacts to C6orf58.
<b>Species Reactivity:</b>	<b>Tested:</b> Human.
<b>Add. Information:</b>	<b>Molecular Weight:</b> 37926 Da
<b>Storage:</b>	Store the antibody undiluted at 2-8°C for one month or (in aliquots) at -20°C for longer. Avoid repeated freezing and thawing. Shelf life: one year from despatch.
<b>Pictures:</b>	C6orf58 antibody (Center) (Cat. #AP50659PU-N) immunohistochemistry analysis in formalin fixed and paraffin embedded human testis carcinoma followed by peroxidase conjugation of the secondary antibody and DAB staining. This data demonstrates the use of the C6orf58 antibody (Center) for immunohistochemistry. Clinical relevance has not been evaluated.



C6orf58 Antibody (Center) (Cat. #AP50659PU-N) western blot analysis in K562 cell line lysates (35µg/lane). This demonstrates the C6orf58 antibody detected the C6orf58 protein (arrow).



C6orf58 Antibody (Center) (Cat. #AP50659PU-N) flow cytometric analysis of K562 cells (right histogram) compared to a negative control cell (left histogram). FITC-conjugated goat-anti-rabbit secondary antibodies were used for the analysis.

