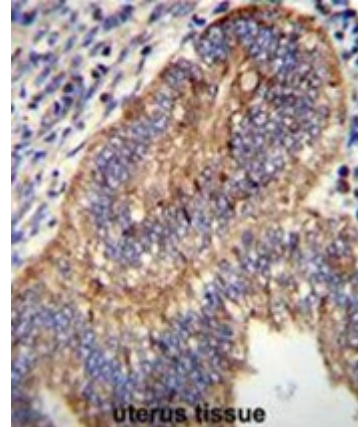


## Polyclonal Antibody to C6orf191 (Center) - Aff - Purified

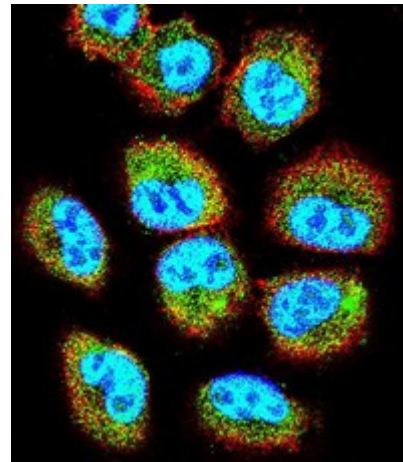
<b>Alternate names:</b>	Putative transmembrane protein
<b>Catalog No.:</b>	AP50655PU-N
<b>Quantity:</b>	0.1 mg
<b>Concentration:</b>	0.25 mg/ml
<b>Uniprot ID:</b>	<a href="#">Q5VVB8</a>
<b>NCBI:</b>	<a href="#">NP_001010876</a>
<b>GeneID:</b>	<a href="#">253582</a>
<b>Host / Isotype:</b>	Rabbit / Ig
<b>Immunogen:</b>	KLH conjugated synthetic peptide between 34-64 amino acids from the Central region of human C6orf191
<b>Format:</b>	<b>State:</b> Liquid purified Ig fraction <b>Purification:</b> Affinity chromatography on Protein A <b>Buffer System:</b> PBS containing 0.09% (W/V) sodium azide as preservative
<b>Applications:</b>	<b>ELISA:</b> 1/1000. <b>Western blotting:</b> 1/100 - 1/500. <b>Immunohistochemistry on paraffin sections:</b> 1/10 - 1/50. <b>Immunofluorescence:</b> 1/10 - 1/50. Other applications not tested. Optimal dilutions are dependent on conditions and should be determined by the user.
<b>Specificity:</b>	This antibody reacts to C6orf191.
<b>Species Reactivity:</b>	<b>Tested:</b> Human.
<b>Add. Information:</b>	<b>Molecular Weight:</b> 14657 Da
<b>Storage:</b>	Store the antibody undiluted at 2-8°C for one month or (in aliquots) at -20°C for longer. Avoid repeated freezing and thawing. Shelf life: one year from despatch.
<b>General Readings:</b>	Mungall, A.J., et al. Nature 425(6960):805-811(2003)

Pictures:

C6orf191 Antibody (Center) (Cat. #AP50655PU-N) immunohistochemistry analysis in formalin fixed and paraffin embedded human uterus tissue followed by peroxidase conjugation of the secondary antibody and DAB staining. This data demonstrates the use of C6orf191 Antibody (Center) for immunohistochemistry. Clinical relevance has not been evaluated.



Confocal immunofluorescent analysis of C6orf191 Antibody (Center) (Cat#AP50655PU-N) with NCI-H460 cell followed by Alexa Fluor 488-conjugated goat anti-rabbit IgG (green). Actin filaments have been labeled with Alexa Fluor 555 phalloidin (red). DAPI was used to stain the cell nuclear (blue).



C6orf191 Antibody (Center) (Cat. #AP50655PU-N) western blot analysis in NCI-H460 cell line lysates (35µg/lane). This demonstrates the C6orf191 antibody detected the C6orf191 protein (arrow).

