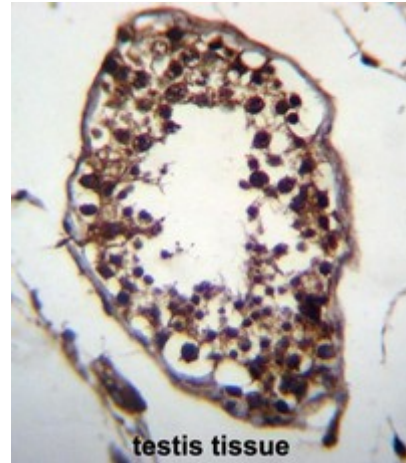


Polyclonal Antibody to C6orf168 (C-term) - Aff - Purified

Alternate names:	Uncharacterized protein
Catalog No.:	AP50653PU-N
Quantity:	0.1 mg
Concentration:	0.25 mg/ml
Uniprot ID:	Q5TGI0
NCBI:	NP_115900
GeneID:	84553
Host / Isotype:	Rabbit / Ig
Immunogen:	KLH conjugated synthetic peptide between 359-389 amino acids from the C-terminal region of human C6orf168
Format:	State: Liquid purified Ig fraction Purification: Affinity chromatography on Protein A Buffer System: PBS containing 0.09% (W/V) sodium azide as preservative
Applications:	ELISA: 1/1000. Western blotting: 1/100 - 1/500. Immunohistochemistry on paraffin sections: 1/10 - 1/50. Other applications not tested. Optimal dilutions are dependent on conditions and should be determined by the user.
Specificity:	This antibody reacts to C6orf168.
Species Reactivity:	Tested: Human.
Add. Information:	Molecular Weight: 46843 Da
Storage:	Store the antibody undiluted at 2-8°C for one month or (in aliquots) at -20°C for longer. Avoid repeated freezing and thawing. Shelf life: one year from despatch.
General Readings:	1. Stein, J.L., et al. Neuroimage 53(3):1160-1174(2010) 2. Mungall, A.J., et al. Nature 425(6960):805-811(2003)

Pictures:

C6orf168 Antibody (C-term) (Cat. #AP50653PU-N) immunohistochemistry analysis in formalin fixed and paraffin embedded human testis tissue followed by peroxidase conjugation of the secondary antibody and DAB staining. This data demonstrates the use of C6orf168 Antibody (C-term) for immunohistochemistry. Clinical relevance has not been evaluated.



C6orf168 Antibody (C-term) (Cat. #AP50653PU-N) western blot analysis in MCF-7 cell line lysates (35µg/lane). This demonstrates the C6orf168 antibody detected the C6orf168 protein (arrow).

