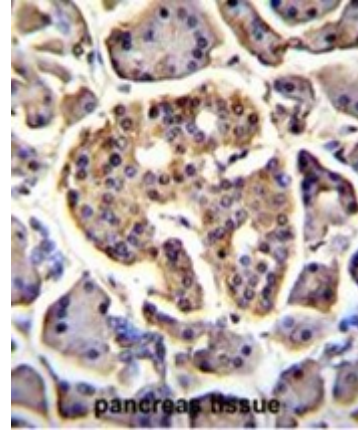


## Polyclonal Antibody to C4orf39 (C-term) - Aff - Purified

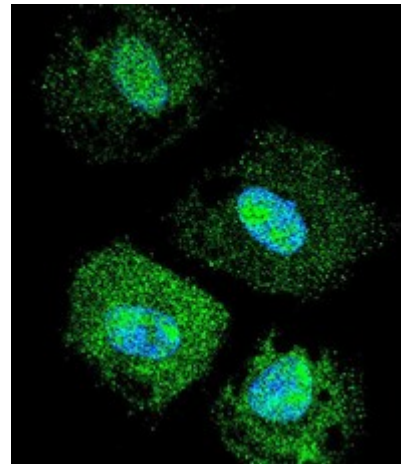
<b>Alternate names:</b>	Uncharacterized protein
<b>Catalog No.:</b>	AP50633PU-N
<b>Quantity:</b>	0.1 mg
<b>Concentration:</b>	0.25 mg/ml
<b>Uniprot ID:</b>	<a href="#">Q96MZ4</a>
<b>NCBI:</b>	<a href="#">NP_694572</a>
<b>GeneID:</b>	<a href="#">152756</a>
<b>Host / Isotype:</b>	Rabbit / Ig
<b>Immunogen:</b>	KLH conjugated synthetic peptide between 105-135 amino acids from the C-terminal region of human C4orf39
<b>Format:</b>	<b>State:</b> Liquid purified Ig fraction <b>Purification:</b> Affinity chromatography on Protein A <b>Buffer System:</b> PBS containing 0.09% (W/V) sodium azide as preservative
<b>Applications:</b>	<b>ELISA:</b> 1/1000. <b>Western blotting:</b> 1/100 - 1/500. <b>Immunohistochemistry on paraffin sections:</b> 1/50 - 1/100. <b>Immunofluorescence:</b> 1/10 - 1/50. Other applications not tested. Optimal dilutions are dependent on conditions and should be determined by the user.
<b>Specificity:</b>	This antibody reacts to C4orf39.
<b>Species Reactivity:</b>	<b>Tested:</b> Human.
<b>Add. Information:</b>	<b>Molecular Weight:</b> 17021 Da
<b>Storage:</b>	Store the antibody undiluted at 2-8°C for one month or (in aliquots) at -20°C for longer. Avoid repeated freezing and thawing. Shelf life: one year from despatch.
<b>General Readings:</b>	Lamesch, P., et al. Genomics 89(3):307-315(2007)

Pictures:

C4orf39 Antibody (C-term) (Cat. #AP50633PU-N) immunohistochemistry analysis in formalin fixed and paraffin embedded human pancreas tissue followed by peroxidase conjugation of the secondary antibody and DAB staining. This data demonstrates the use of C4orf39 Antibody (C-term) for immunohistochemistry. Clinical relevance has not been evaluated.



Confocal immunofluorescent analysis of C4orf39 Antibody (C-term) (Cat#AP50633PU-N) with NCI-H460 cell followed by Alexa Fluor 488-conjugated goat anti-rabbit IgG (green). DAPI was used to stain the cell nuclear (blue).



C4orf39 Antibody (C-term) (Cat. #AP50633PU-N) western blot analysis in NCI-H460 cell line lysates (35µg/lane). This demonstrates the C4orf39 antibody detected the C4orf39 protein (arrow).

