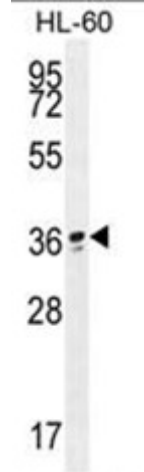


Polyclonal Antibody to C4orf30 (C-term) - Aff - Purified

Alternate names:	DCAF16, DDB1- and CUL4-associated factor 16
Catalog No.:	AP50630PU-N
Quantity:	0.1 mg
Concentration:	0.25 mg/ml
Background:	May function as a substrate receptor for CUL4-DDB1 E3 ubiquitin-protein ligase complex.
Uniprot ID:	Q9NXF7
NCBI:	NP_060211
GeneID:	54876
Host / Isotype:	Rabbit / Ig
Immunogen:	KLH conjugated synthetic peptide between 150-181 amino acids from the C-terminal region of human C4orf30
Format:	State: Liquid purified Ig fraction Purification: Affinity chromatography on Protein A Buffer System: PBS containing 0.09% (W/V) sodium azide as preservative
Applications:	ELISA: 1/1000. Western blotting: 1/100 - 1/500. Flow Cytometry: 1/10 - 1/50. Other applications not tested. Optimal dilutions are dependent on conditions and should be determined by the user.
Specificity:	This antibody reacts to C4orf30.
Species Reactivity:	Tested: Human.
Add. Information:	Molecular Weight: 24193 Da
Storage:	Store the antibody undiluted at 2-8°C for one month or (in aliquots) at -20°C for longer. Avoid repeated freezing and thawing. Shelf life: one year from despatch.
General Readings:	1. Okada, Y., et al. Hum. Mol. Genet. 19(11):2303-2312(2010) 2. Jin, J., et al. Mol. Cell 23(5):709-721(2006)

Pictures:

C4orf30 Antibody (C-term) (Cat. #AP50630PU-N) western blot analysis in HL-60 cell line lysates (35µg/lane). This demonstrates the C4orf30 antibody detected the C4orf30 protein (arrow).



C4orf30 Antibody (C-term) (Cat. #AP50630PU-N) flow cytometric analysis of HL-60 cells (right histogram) compared to a negative control cell (left histogram). FITC-conjugated goat-anti-rabbit secondary antibodies were used for the analysis.

