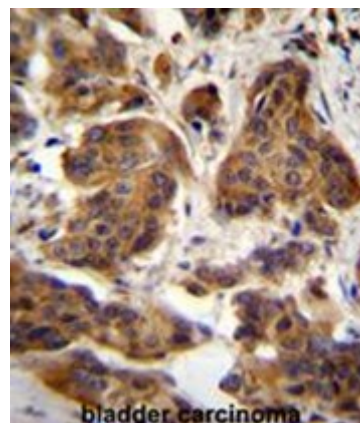


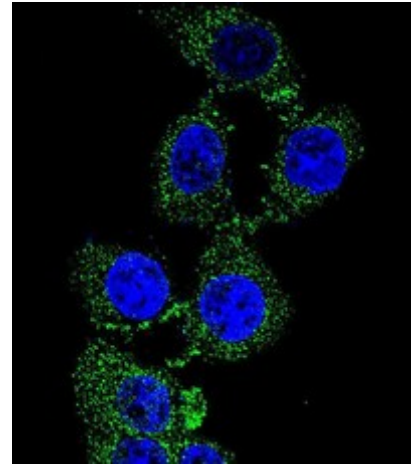
**AP50626PU-N****Polyclonal Antibody to C4orf21 (N-term) - Aff - Purified**

<b>Alternate names:</b>	Uncharacterized protein
<b>Quantity:</b>	0.4 ml
<b>Concentration:</b>	lot specific
<b>Uniprot ID:</b>	<a href="#">Q86YA3</a>
<b>NCBI:</b>	<a href="#">NP_060862</a>
<b>GeneID:</b>	<a href="#">55345</a>
<b>Host / Isotype:</b>	Rabbit / Ig
<b>Immunogen:</b>	KLH conjugated synthetic peptide between 45-74 amino acids from the N-terminal region of human C4orf21
<b>Format:</b>	<b>State:</b> Liquid purified Ig fraction <b>Purification:</b> Affinity chromatography on Protein A <b>Buffer System:</b> PBS containing 0.09% (W/V) sodium azide as preservative
<b>Applications:</b>	<b>ELISA:</b> 1/1000. <b>Western blotting:</b> 1/100 - 1/500. <b>Immunohistochemistry on paraffin sections:</b> 1750 -1 /100. <b>Immunofluorescence:</b> 1/10 - 1/50. Other applications not tested. Optimal dilutions are dependent on conditions and should be determined by the user.
<b>Specificity:</b>	This antibody reacts to C4orf21.
<b>Species Reactivity:</b>	<b>Tested:</b> Human and Mouse.
<b>Add. Information:</b>	<b>Molecular Weight:</b> 119347 Da
<b>Storage:</b>	Store the antibody undiluted at 2-8°C for one month or (in aliquots) at -20°C for longer. Avoid repeated freezing and thawing. Shelf life: one year from despatch.

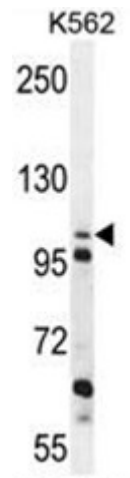
**Pictures:** C4orf21 Antibody (N-term) (Cat. #AP50626PU-N) immunohistochemistry analysis in formalin fixed and paraffin embedded human bladder carcinoma followed by peroxidase conjugation of the secondary antibody and DAB staining. This data demonstrates the use of C4orf21 Antibody (N-term) for immunohistochemistry. Clinical relevance has not been evaluated.



Confocal immunofluorescent analysis of C4orf21 Antibody (N-term)(Cat#AP50626PU-N) with 293 cell followed by Alexa Fluor 488-conjugated goat anti-rabbit IgG (green). DAPI was used to stain the cell nuclear (blue).



C4orf21 Antibody (N-term) (Cat. #AP50626PU-N) western blot analysis in K562 cell line lysates (35µg/lane). This demonstrates the C4orf21 antibody detected the C4orf21 protein (arrow).



C4orf21 Antibody (N-term) (Cat. #AP50626PU-N) western blot analysis in mouse Neuro-2a cell line lysates (35µg/lane). This demonstrates the C4orf21 antibody detected the C4orf21 protein (arrow).

