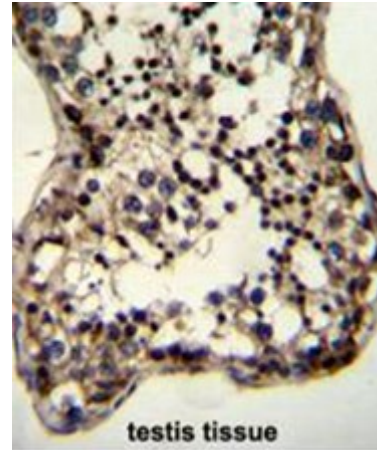


Polyclonal Antibody to C2orf80 (C-term) - Aff - Purified

Alternate names:	Uncharacterized protein
Catalog No.:	AP50614PU-N
Quantity:	0.1 mg
Concentration:	0.25 mg/ml
Uniprot ID:	Q0P641
NCBI:	NP_001092804
GeneID:	389073
Host / Isotype:	Rabbit / Ig
Immunogen:	KLH conjugated synthetic peptide between 170-193 amino acids from the C-terminal region of human C2orf80
Format:	State: Liquid purified Ig fraction Purification: Affinity chromatography on Protein A Buffer System: PBS containing 0.09% (W/V) sodium azide as preservative
Applications:	ELISA: 1/1000. Western blotting: 1/100 - 1/500. Immunohistochemistry on paraffin sections: 1/10 - 1/50. Flow Cytometry: 1/10 - 1/50. Other applications not tested. Optimal dilutions are dependent on conditions and should be determined by the user.
Specificity:	This antibody reacts to C2orf80.
Species Reactivity:	Tested: Human.
Add. Information:	Molecular Weight: 22038 Da
Storage:	Store the antibody undiluted at 2-8°C for one month or (in aliquots) at -20°C for longer. Avoid repeated freezing and thawing. Shelf life: one year from despatch.
General Readings:	Xu, J., et al. Proc. Natl. Acad. Sci. U.S.A. 107(5):2136-2140(2010)

Pictures:

C2orf80 Antibody (C-term) (Cat. #AP50614PU-N) immunohistochemistry analysis in formalin fixed and paraffin embedded human testis tissue followed by peroxidase conjugation of the secondary antibody and DAB staining. This data demonstrates the use of C2orf80 Antibody (C-term) for immunohistochemistry. Clinical relevance has not been evaluated.



C2orf80 Antibody (C-term) (Cat. #AP50614PU-N) western blot analysis in CEM cell line lysates (35µg/lane). This demonstrates the C2orf80 antibody detected the C2orf80 protein (arrow).



C2orf80 Antibody (C-term) (Cat. #AP50614PU-N) flow cytometric analysis of CEM cells (right histogram) compared to a negative control cell (left histogram). FITC-conjugated goat-anti-rabbit secondary antibodies were used for the analysis.

