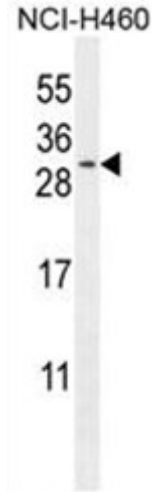


**AP50604PU-N****Polyclonal Antibody to C2orf51 (Center) - Aff - Purified**

<b>Alternate names:</b>	Protein TSC21, TSC21
<b>Quantity:</b>	0.4 ml
<b>Concentration:</b>	lot specific
<b>Uniprot ID:</b>	<a href="#">Q96LM6</a>
<b>NCBI:</b>	<a href="#">NP_689883</a>
<b>GeneID:</b>	<a href="#">200523</a>
<b>Host / Isotype:</b>	Rabbit / Ig
<b>Immunogen:</b>	KLH conjugated synthetic peptide between 73-101 amino acids from the Central region of human C2orf51
<b>Format:</b>	<b>State:</b> Liquid purified Ig fraction <b>Purification:</b> Affinity chromatography on Protein A <b>Buffer System:</b> PBS containing 0.09% (W/V) sodium azide as preservative
<b>Applications:</b>	<b>ELISA:</b> 1/1000. <b>Western blotting:</b> 1/100 - 1/500. <b>Flow Cytometry:</b> 1/10 - 1/50. Other applications not tested. Optimal dilutions are dependent on conditions and should be determined by the user.
<b>Specificity:</b>	This antibody reacts to C2orf51.
<b>Species Reactivity:</b>	<b>Tested:</b> Human.
<b>Add. Information:</b>	<b>Molecular Weight:</b> 20615 Da
<b>Storage:</b>	Store the antibody undiluted at 2-8°C for one month or (in aliquots) at -20°C for longer. Avoid repeated freezing and thawing. Shelf life: one year from despatch.
<b>General Readings:</b>	Yu, Z., et al. Mol. Biol. Rep. 34(2):127-134(2007)

**Pictures:**

C2orf51 Antibody (Center) (Cat. #AP50604PU-N) western blot analysis in NCI-H460 cell line lysates (35µg/lane). This demonstrates the C2orf51 antibody detected the C2orf51 protein (arrow).



C2orf51 Antibody (Center) (Cat. #AP50604PU-N) flow cytometric analysis of NCI-H460 cells (right histogram) compared to a negative control cell (left histogram). FITC-conjugated goat-anti-rabbit secondary antibodies were used for the analysis.

