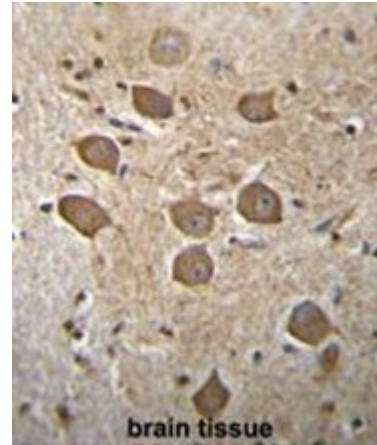


## Polyclonal Antibody to C2orf50 (Center) - Aff - Purified

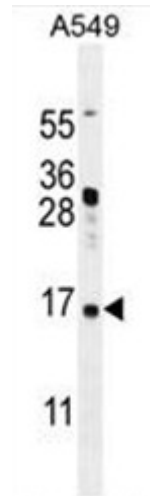
<b>Alternate names:</b>	Uncharacterized protein
<b>Catalog No.:</b>	AP50603PU-N
<b>Quantity:</b>	0.1 mg
<b>Concentration:</b>	0.25 mg/ml
<b>Uniprot ID:</b>	<a href="#">Q96LR7</a>
<b>NCBI:</b>	<a href="#">NP_872306</a>
<b>GeneID:</b>	<a href="#">130813</a>
<b>Host / Isotype:</b>	Rabbit / Ig
<b>Immunogen:</b>	KLH conjugated synthetic peptide between 83-112 amino acids from the Central region of human C2orf50
<b>Format:</b>	<b>State:</b> Liquid purified Ig fraction <b>Purification:</b> Affinity chromatography on Protein A <b>Buffer System:</b> PBS containing 0.09% (W/V) sodium azide as preservative
<b>Applications:</b>	<b>ELISA:</b> 1/1000. <b>Western blotting:</b> 1/100 - 1/500. <b>Immunohistochemistry on paraffin sections:</b> 1/10 - 1/50. <b>Flow Cytometry:</b> 1/10 - 1/50. Other applications not tested. Optimal dilutions are dependent on conditions and should be determined by the user.
<b>Specificity:</b>	This antibody reacts to C2orf50.
<b>Species Reactivity:</b>	<b>Tested:</b> Human.
<b>Add. Information:</b>	<b>Molecular Weight:</b> 17838 Da
<b>Storage:</b>	Store the antibody undiluted at 2-8°C for one month or (in aliquots) at -20°C for longer. Avoid repeated freezing and thawing. Shelf life: one year from despatch.
<b>General Readings:</b>	Strausberg, R.L., et al. Proc. Natl. Acad. Sci. U.S.A. 99(26):16899-16903(2002)

**Pictures:**

C2orf50 Antibody (Center) (Cat. #AP50603PU-N) immunohistochemistry analysis in formalin fixed and paraffin embedded human brain tissue followed by peroxidase conjugation of the secondary antibody and DAB staining. This data demonstrates the use of C2orf50 Antibody (Center) for immunohistochemistry. Clinical relevance has not been evaluated.



C2orf50 Antibody (Center) (Cat. #AP50603PU-N) western blot analysis in A549 cell line lysates (35µg/lane). This demonstrates the C2orf50 antibody detected the C2orf50 protein (arrow).



C2orf50 Antibody (Center) (Cat. #AP50603PU-N) flow cytometric analysis of A549 cells (right histogram) compared to a negative control cell (left histogram). FITC-conjugated goat-anti-rabbit secondary antibodies were used for the analysis.

