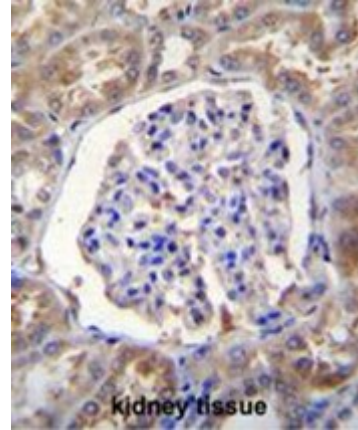


## Polyclonal Antibody to C20orf196 (C-term) - Aff - Purified

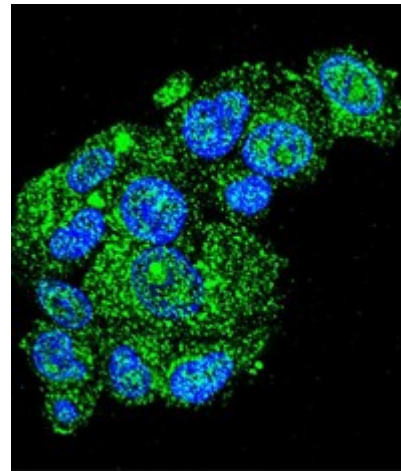
<b>Alternate names:</b>	Uncharacterized protein
<b>Catalog No.:</b>	AP50576PU-N
<b>Quantity:</b>	0.1 mg
<b>Concentration:</b>	0.25 mg/ml
<b>Uniprot ID:</b>	<a href="#">Q8IYI0</a>
<b>NCBI:</b>	<a href="#">NP_689717</a>
<b>GeneID:</b>	<a href="#">149840</a>
<b>Host / Isotype:</b>	Rabbit / Ig
<b>Immunogen:</b>	KLH conjugated synthetic peptide between 169-199 amino acids from the C-terminal region of human C20orf196
<b>Format:</b>	<b>State:</b> Liquid purified Ig fraction <b>Purification:</b> Affinity chromatography on Protein A <b>Buffer System:</b> PBS containing 0.09% (W/V) sodium azide as preservative
<b>Applications:</b>	<b>ELISA:</b> 1/1000. <b>Western blotting:</b> 1/100 - 1/500. <b>Immunohistochemistry on paraffin sections:</b> 1/10 - 1/50. <b>Immunofluorescence:</b> 1/10 - 1/50. Other applications not tested. Optimal dilutions are dependent on conditions and should be determined by the user.
<b>Specificity:</b>	This antibody reacts to C20orf196.
<b>Species Reactivity:</b>	<b>Tested:</b> Human.
<b>Add. Information:</b>	<b>Molecular Weight:</b> 22938 Da
<b>Storage:</b>	Store the antibody undiluted at 2-8°C for one month or (in aliquots) at -20°C for longer. Avoid repeated freezing and thawing. Shelf life: one year from despatch.
<b>General Readings:</b>	Strausberg, R.L., et al. Proc. Natl. Acad. Sci. U.S.A. 99(26):16899-16903(2002)

Pictures:

C20orf196 Antibody (C-term) (Cat. #AP50576PU-N) immunohistochemistry analysis in formalin fixed and paraffin embedded human kidney tissue followed by peroxidase conjugation of the secondary antibody and DAB staining. This data demonstrates the use of C20orf196 Antibody (C-term) for immunohistochemistry. Clinical relevance has not been evaluated.



Confocal immunofluorescent analysis of C20orf196 Antibody (C-term) (Cat#AP50576PU-N) with HepG2 cell followed by Alexa Fluor 488-conjugated goat anti-rabbit IgG (green). DAPI was used to stain the cell nuclear (blue).



C20orf196 Antibody (C-term) (Cat. #AP50576PU-N) western blot analysis in Jurkat cell line lysates (35µg/lane). This demonstrates the C20orf196 antibody detected the C20orf196 protein (arrow).

