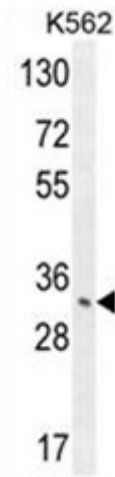


Polyclonal Antibody to C20orf177 (N-term) - Aff - Purified

| | |
|----------------------------|---|
| Alternate names: | Uncharacterized protein |
| Catalog No.: | AP50573PU-N |
| Quantity: | 0.1 mg |
| Concentration: | 0.25 mg/ml |
| Uniprot ID: | Q9NTX9 |
| NCBI: | NP_001177755 |
| GeneID: | 63939 |
| Host / Isotype: | Rabbit / Ig |
| Immunogen: | KLH conjugated synthetic peptide between 41-70 amino acids from the N-terminal region of human C20orf177 |
| Format: | State: Liquid purified Ig fraction Purification: Affinity chromatography on Protein A Buffer System: PBS containing 0.09% (W/V) sodium azide as preservative |
| Applications: | ELISA: 1/1000. Western blotting: 1/100 - 1/500. Flow Cytometry: 1/10 - 1/50. Other applications not tested. Optimal dilutions are dependent on conditions and should be determined by the user. |
| Specificity: | This antibody reacts to C20orf177. |
| Species Reactivity: | Tested: Human. |
| Add. Information: | Molecular Weight: 42052 Da |
| Storage: | Store the antibody undiluted at 2-8°C for one month or (in aliquots) at -20°C for longer. Avoid repeated freezing and thawing. Shelf life: one year from despatch. |
| General Readings: | 1. Lamesch, P., et al. Genomics 89(3):307-315(2007) 2. Deloukas, P., et al. Nature 414(6866):865-871(2001) |

Pictures:

C20orf177 Antibody (N-term) (Cat. #AP50573PU-N) western blot analysis in K562 cell line lysates (35µg/lane). This demonstrates the EKI2 antibody detected the EKI2 protein (arrow).



C20orf177 Antibody (N-term) (Cat. #AP50573PU-N) flow cytometric analysis of K562 cells (right histogram) compared to a negative control cell (left histogram). FITC-conjugated goat-anti-rabbit secondary antibodies were used for the analysis.

