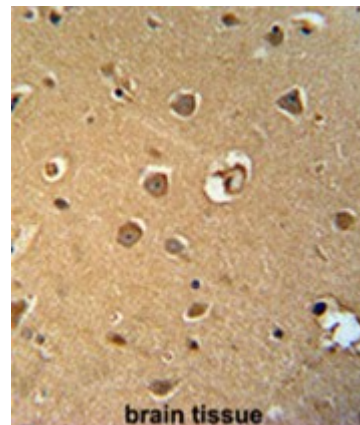


Polyclonal Antibody to C20orf165 (Center) - Aff - Purified

Catalog No.:	AP50572PU-N
Quantity:	0.1 mg
Concentration:	0.25 mg/ml
Uniprot ID:	Q9BR10
NCBI:	NP_542175
GeneID:	128497
Host / Isotype:	Rabbit / Ig
Immunogen:	KLH conjugated synthetic peptide between 101-131 amino acids from the Central region of human C20orf165
Format:	State: Liquid purified Ig fraction Purification: Affinity chromatography on Protein A Buffer System: PBS containing 0.09% (W/V) sodium azide as preservative
Applications:	ELISA: 1/1000. Western blotting: 1/100 - 1/500. Immunohistochemistry on paraffin sections: 1/50 - 1/100. Other applications not tested. Optimal dilutions are dependent on conditions and should be determined by the user.
Specificity:	This antibody reacts to C20orf165.
Species Reactivity:	Tested: Human and Mouse.
Add. Information:	Molecular Weight: 23834 Da
Pictures:	C20orf165 antibody (Center) (Cat. #AP50572PU-N) immunohistochemistry analysis in formalin fixed and paraffin embedded human brain tissue followed by peroxidase conjugation of the secondary antibody and DAB staining. This data demonstrates the use of the C20orf165 antibody (Center) for immunohistochemistry. Clinical relevance has not been evaluated.



C20orf165 Antibody (Center) (Cat. #AP50572PU-N) western blot analysis in mouse liver tissue lysates (15µg/lane). This demonstrates the C20orf165 antibody detected C20orf165 protein (arrow).

